

港樂  
HKPhil

首席贊助 Principal Patron



◆ MUSIC FROM **FINAL FANTASY® VI, VII, AND X**  
電玩系列交響音樂

# Final Symphony

太古  
輕鬆  
樂聚

SWIRE  
Denim

太古輕鬆樂聚系列 Swire Denim Series

**FINAL FANTASY: FINAL SYMPHONY**

梵志登 Jaap van Zweden  
音樂總監 Music Director

余隆 Yu Long  
首席客席指揮 Principal Guest Conductor

22 & 23 NOV 2017 | WED & THU 8PM

香港文化中心音樂廳 Hong Kong Cultural Centre Concert Hall

香港管弦樂團由香港特別行政區政府資助，亦為香港文化中心場地伙伴  
The Hong Kong Philharmonic Orchestra is financially supported by the Government of the Hong Kong Special Administrative Region and is a Venue Partner of the Hong Kong Cultural Centre

總代理 General Agent



柏斯琴行  
PARSONS MUSIC



# Premium Pianos from Germany

四百多年德國製琴精髓集於此

指定型號特設白金信用卡/  
美國運通卡**85折**優惠



  
**GROTRIAN**  
SEIT 1835

[www.grotrian.de](http://www.grotrian.de)

**WILH. STEINBERG**  
**WST**  
Fine pianos. Made in Germany.  
Since 1877.

[www.wilhsteinberg.de](http://www.wilhsteinberg.de)

  
**SEILER**  
1849

[www.seiler-pianos.de](http://www.seiler-pianos.de)

[www.parsonsmusic.com](http://www.parsonsmusic.com)

# FINAL FANTASY: FINAL SYMPHONY

## 華東尼 **Jonne VALTONEN**

4'

幻想序曲 *Fantasy Overture: Circle within a Circle within a Circle*

p. 10

## 植松伸夫 **Nobuo UEMATSU**

18'

FINAL FANTASY VI—Symphonic Poem (Born with the Gift of Magic)

ティナのテーマ | 魔導士ケフカ | 幻獸界 | 戦闘 等

Terra's Theme | Kefka | Esper World | Battle etc.

p. 11

## 植松伸夫、浜渦正志

19'

## **Nobuo UEMATSU & Masashi HAMAUZU**

FINAL FANTASY X: Piano Concerto

ビサイド島 | 祈りの歌 | 雷平原 | 襲撃 等

Besaid | Hymn of the Faith | Thunder Plains | Assault etc.

I. ザナルカンド Zanarkand

II. 祈り Inori

III. 決戦 Kessen

中場休息 **INTERMISSION**

p. 12

## 植松伸夫 **Nobuo UEMATSU**

42'

FINAL FANTASY VII: Symphony in Three Movements

FFVIIメインテーマ | J-E-N-O-V-A | ティファのテーマ | 偉大なる戦士 等

Main Theme of FINAL FANTASY VII | J-E-N-O-V-A | Tifa's Theme | The Great Warrior etc.

I. ニブルヘイム事件 Nibelheim Incident

II. 花火に消された言葉 Words Drowned by Fireworks

III. 星の危機 The Planet's Crisis

Final Symphony © & © 2013-2017 Merregnon Studios. Licensed by Square Enix.

FINAL FANTASY is a registered trademark or trademark of Square Enix Group Co., Ltd.

p. 15

朱俊熹 指揮 **Philip Chu** Conductor

p. 17

張加全 鋼琴 **Mischa Cheung** Piano



請關掉手提電話及其他電子裝置  
Please turn off your mobile phone  
and other electronic devices



請勿拍照、錄音或錄影  
No photography, recording or filming



請勿飲食  
No eating or drinking



演奏期間請保持安靜  
Please keep noise to a minimum  
during the performance



場刊源自樹木，惠及環境，請與同行者共享場刊  
House programmes grow on tree—help us be  
environmentally responsible by sharing your  
programme with your companion



請留待整首樂曲完結後才報以掌聲鼓勵  
Please reserve your applause  
until the end of the entire work



如不欲保留場刊，請把它放回原位；  
又或於完場後放入場地的回收箱  
If you don't wish to keep your house programme,  
please leave it at your seat, or return it to the  
admission point for recycling



多謝支持環保  
Thank you for caring for  
the Earth

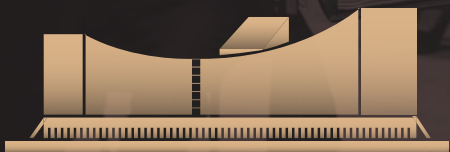
# 2017/18 YOUR **HKPHIL**

**8**

個音樂會系列  
**CONCERT  
SERIES**

**34**

套音樂節目  
CONCERT PROGRAMMES



**> 60**

場主要音樂會  
MAINSTAGE  
CONCERTS

**> 100**

套免費外展及教育活動令近50,000名師生受惠  
free education and outreach activities  
for nearly 50,000 students and teachers

## "Today's HK Phil is absolutely wo

"van Zweden has taken the  
HK Phil to a new level, one that  
neither the musicians nor their  
fans knew existed."

*Time Out Hong Kong*

「整個演出散發著唯美般的光彩」

周凡夫《大公報》

"A Ring from Hong Kong  
to take on the world"

*Gramophone*

"HK Phil, a Hong Kong Orchestra that  
we are proud of"

*Audiotechnique*

JAAP VAN ZWEDEN

4<sup>TH</sup>

《指環》第四部曲  
chapter of *Ring Cycle*

1<sup>ST</sup>

香港第一個即將完成華格納《指環》整套聯篇歌劇的管弦樂團  
orchestra to complete Wagner's epic *Ring Cycle* in Hong Kong

# 44<sup>th</sup> 樂季 SEASON

96 位樂師 PLAYERS

200,000

個心靈被我們的音樂觸動 PEOPLE REACHED ANNUALLY

40 位國際音樂家  
INTERNATIONAL  
MUSICIANS

World-class!" *De Telegraaf*

「登峰造極……（梵志登）領導港樂  
更上一層樓，不僅是港樂也是香港  
所有樂迷之福。」

李歐梵《明報》

「今天的港樂團絕對是  
世界水準！」

黃牧

hkphil.org



你

## 成就傑出非凡的港樂

樂團單靠票房收入並不能維持其營運

現時樂團近四分之一營運成本是依靠各位熱愛港樂的朋友和贊助機構的捐助。款項不僅支持我們為你送上精彩的音樂會，更讓我們實踐使命，令更多人喜愛和欣賞音樂。

### 如何支持你的香港管弦樂團？

- 捐助常年基金，為香港帶來更精彩多元的音樂節目
- 資助學生票資助基金，提供門票半價優惠予本港全日制學生
- 投入社區音樂會，把音樂帶到不同社區
- 支持樂團席位贊助，與樂團建立密切聯繫
- 贊助個別音樂會，款待你的貴賓及提升品牌形象
- 加入大師會，預留全年最佳座位

查詢 ENQUIRIES:

2721 2030 | [development@hkphil.org](mailto:development@hkphil.org)



把音樂推廣到社區  
For Our Community Work

For Music Education  
推廣音樂教育



# IT TAKES YOU TO MAKE THE ORCHESTRA GREAT


## DID YOU KNOW THE HK PHIL IS A CHARITABLE ORGANISATION?

We are truly thankful for the support of our wonderful donors and sponsors. This support covers one quarter of the costs of putting on the concerts you love. It enables us to maintain the highest standard within the orchestra and present the most vibrant programmes. It also helps us realise our commitment to the community.



## HOW CAN YOU SUPPORT YOUR HK PHIL?

- Bring the finest music to Hong Kong through the **ANNUAL FUND**
- Subsidise half-price tickets for local full-time students through the **STUDENT TICKET FUND**
- Share music with those in need through the **COMMUNITY CONCERT**
- Build an intimate connection with Your HK Phil musicians through **CHAIR ENDOWMENT**
- Entertain your VIPs and boost your brand profile through **CONCERT SPONSORSHIP**
- Access best-available seats all year round through the **MAESTRO CIRCLE**



支持我們精益求精  
For Our Artistic Excellence

For Your VIP Entertainment  
提供款客平台

A SOUND COMMITMENT 弦諾







植松伸夫

Nobuo Uematsu

PHOTO: Philippe Ramakers

## 引言

歡迎各位蒞臨今晚的音樂會！電玩系列《FINAL FANTASY》自1987年推出以來，30年來已成功在電玩界奠定了領導地位。這些年來行內急速演變，無論是平面設計和CGI質素，遊戲模式亦由單打獨鬥發展至網上多個玩家互動。

科技的日新月異代表我們可以創作電子遊戲音樂時有更大發揮。最初，因為科技的局限，很多聲音只由電子合成器製作。隨後，作曲家可以在錄音室錄製及改良真實聲音以達至他們追求的音效。著名作曲家植松伸夫為《FINAL FANTASY》電玩系列的大部分遊戲作曲，後來其他作曲家陸續加入。

今晚，你將會聽到這個遊戲系列中多首耳熟能詳的主題音樂，我們重新編曲，由管弦樂團現場演奏，為電玩玩家帶來不一樣的音樂廳聆聽體驗，發掘這些主題音樂在遊戲以外的另一層次。你將會發現在這個音樂會所聽到的，與平時玩電玩時常聽的，有截然不同的體會。

## 朱俊熹

指揮

## INTRODUCTION

Welcome to our concert tonight! The FINAL FANTASY series has been around for 30 years and in that time has established itself as one of the most popular and successful franchises in the game industry. These years have witnessed rapid evolution in the industry, in the improvement of graphics and CGI (computer-generated imagery) quality, as well as the switch from solo console playing to multi-player online interaction.

Advances in technology mean that there is more we can do with the soundtracks of these games. In the beginning, due to the limitations of technology, most sounds were created on a synthesiser. Later on, composers were able to use actual sounds recorded in a studio with additional enhancements if they wanted. The legendary Nobuo Uematsu composed the music for most games in the FINAL FANTASY series, with other composers joining in later.

Tonight you will hear many familiar musical themes that you may recognise from the games. We took the tunes and rearranged them especially for a concert hall experience with a live orchestra. We will explore these themes outside their usual context. Let's see if you can find a different dimension to the music that you might have listened to many times before!

## PHILIP CHU

Conductor

# 最終交響曲 FINAL SYMPHONY

FINAL FANTASY® VI、VII及X樂曲選  
Music from FINAL FANTASY® VI, VII and X

「最終交響曲」乃獲官方授權之音樂會系列，演出電玩《FINAL FANTASY》VI、VII及X中的交響樂作品。音樂會中演出的獨家改編版由浜渦正志、華東尼和華納莫製作。

2013年5月，「最終交響曲」首演在德國胡帕泰歷史會堂舉行，由斯泰亞指揮胡帕泰交響樂團演出。同月，「最終交響曲」在倫敦巴比肯中心作英國首演，由倫敦交響樂團演出。這場音樂會也是倫敦交響樂團歷來首次演出電玩音樂。「最終交響曲」隨後也在日本、丹麥、瑞典和芬蘭演出。

2015年，「最終交響曲」專輯數碼版全球發行，不但榮登十多個國家的iTunes古典音樂榜第一位，而且分別在Billboard排行榜及英國官方排行榜榮登五大古典專輯。專輯由倫敦交響樂團在艾比路錄音室灌錄。

Final Symphony is an officially licensed series of concerts featuring symphonic music from the video games FINAL FANTASY VI, VII and X. The exclusive arrangements are penned by Masashi Hamauzu, Jonne Valtonen and Roger Wanamo.

In May 2013, Final Symphony was premiered by the Wuppertal Symphony Orchestra at the Historische Stadthalle in Wuppertal, Germany under the leadership of Eckehard Stier. In the same month, the UK premiere of Final Symphony took place with the London Symphony Orchestra at the Barbican Centre in London, marking the orchestra's first-ever performance of music from video games. Subsequent concerts have been performed in Japan, Denmark, Sweden and Finland.

2015 saw the global, digital launch of the Final Symphony album, hitting the number 1 spot on the iTunes Classical Charts in more than ten countries and entering the Classical Album Top 5 of both the Billboard Charts and the Official UK Charts. It was recorded by the London Symphony Orchestra at Abbey Road Studios.



「最終交響曲」在倫敦巴比肯中心作英國首演，倫敦交響樂團演出。

The UK premiere of Final Symphony took place with the London Symphony Orchestra at the Barbican Centre in London. by Philippe Ramakers

## FINAL FANTASY VI

### Symphonic Poem: Born with the Gift of Magic

ティナのテーマ | 魔導士ケフカ | 幻獸界 | 戦闘 等

Terra's Theme | Kefka | Esper World | Battle etc.

交響詩《天賦的魔法》改編及配器都由華納莫一手包辦。華納莫本人則對《FINAL FANTASY VI》感受尤深：「我第一次玩《FINAL FANTASY》就是玩《FINAL FANTASY VI》。我還記得當時的感覺多麼震撼：故事深刻、人物耐人尋味，更不用說音樂美不勝收。我希望以這個改編，將自己所體會的故事娓娓道來。」

改編版的焦點落在女主角蒂娜·布蘭佛德的旅程上。蒂娜天生擁有神秘魔力，自小在帝國被當成奴隸，更被訓練成大殺傷力的兵器。蒂娜擺脫皇帝對她的操縱之後，發現對自己的過去一片空白。於是她展開旅途，誓要找回自己的身份，以及自己的神秘力量到底來自何方。過程中她要拯救世界，不讓奸角凱夫卡（皇帝的心腹，雖然是巫師，但言行像個弄臣一樣）得逞。

華納莫解釋：「我在樂曲裡仔細審視蒂娜生命中各個階段，審視當中發生的事情如何塑造她。同時也較深入地了解凱夫卡及其變態人格。最終戰役過後，戰場上的硝煙漸漸散去，蒂娜終於能重拾自己的過去，可以自由地活下去了。」

Roger Wanamo, the arranger and orchestrator of this symphonic poem, has a strong connection with this particular part of the FINAL FANTASY-series: "VI was the first FINAL FANTASY game I ever played and I remember being totally swept away by the depth of the story, the intricate characters and not to mention, the stunningly beautiful music. With this arrangement I wish to retell that story as I experienced it."

The focus of this arrangement is on the journey of Terra Branford, the heroine born with the gift of magic. She has grown up as a slave to the Empire and has been raised to become a weapon of mass destruction. As Terra breaks free from the Emperor's bonds, she finds that she is unable to recall anything about her past. She sets out on a journey to recover her own identity, and also to find out the source behind her strange powers. In her adventures she also has to save the world from the evil villain Kefka, the emperor's jester-like court mage.

Roger Wanamo explains: "Over the course of the piece, I examine the different stages of Terra's life that have made her into the person she is. I also take a more in-depth look at Kefka and his psychopathic personality. Once the final battle is over, and the smoke over the battlefield has cleared, Terra has finally come to grips with her past and may live freely."

## FINAL FANTASY X

### Piano Concerto

ビサイド島 | 祈りの歌 | 雷平原 | 襲撃 等

Besaid | Hymn of the Faith | Thunder Plains | Assault etc.

I. ザナルカンド Zanarkand

II. 祈り Inori

III. 決戦 Kessen

《FINAL FANTASY X》鋼琴協奏曲的改編者浜渦正志正是《FINAL FANTASY X》配樂的原作者之一（另外兩位原作者是植松伸夫和仲野順也）。浜渦正志覺得為《FINAL FANTASY X》寫作音樂是很特別的體驗：「比起平常寫作音樂，這次我首先會照顧自己的感受。當然我十分清楚故事情節，但創作意念也不單來自《FINAL FANTASY X》的遊戲世界，有些其實來自現實世界。」

浜渦正志為《FINAL FANTASY X》系列寫作音樂寫了好一段日子，因此在他眼中，與其說《FINAL FANTASY》是連串獨立的場景和故事，倒不如說更像一個連續體。至於「最終交響曲」裡採用的素材，他更希望反映出這個宏大的願景，而非按照某些故事的起承轉合寫作，又或刻劃故事中的一批角色。他把「最終交響曲」視為令願景成真的機會：「當初寫作《FINAL FANTASY X》的時候，有些東西我覺得表達得還不夠好，現在我覺得可以將這些都表現出來了。」

浜渦正志也非常欣賞華納莫的配器，認為「他是歐洲最優秀的配器大師之一。」

Masashi Hamauzu, the arranger of this piano concerto, is also one of the original composers of the music for the FINAL FANTASY X (alongside Nobuo Uematsu and Junya Nakano). He feels that working on FINAL FANTASY X was something very special: "In this instance I could give more priority to my feelings and sensitivity when composing music than often is the case. Naturally I also had the storyline of the game strongly in my mind, but I also got ideas from the real world outside the creations of the FINAL FANTASY X-world."

Having worked for so long with the FINAL FANTASY X-series, Masashi Hamauzu sees it more as a continuum than as a series of separate scenes and stories. His inspiration for the material in this concert is more a reflection of that bigger vision and not so much connected to any certain story-arc or a set of characters. He sees this concert as an opportunity to fulfill his vision of the music even further: "There were a few things I couldn't express well enough while I was working originally on the music of FINAL FANTASY X, and I feel like I could express those things this time around."

Hamauzu is also very impressed by the work of Roger Wanamo, the orchestrator of this concerto, "he is one of the best orchestrators in Europe".

## FINAL FANTASY VII

### Symphony in Three Movements

FFVIIメインテーマ | J-E-N-O-V-A | ティファのテーマ | 偉大なる戦士 等

Main Theme of FINAL FANTASY VII | J-E-N-O-V-A | Tifa's Theme | The Great Warrior etc.

I. ニブルヘイム事件 Nibelheim Incident

II. 花火に消された言葉 Words Drowned by Fireworks

III. 星の危機 The Planet's Crisis

#### 尼布爾海姆事件

第一樂章圍繞遊戲中的奸角錫菲羅斯（以三音動機代表）。為樂曲改編及配器的華東尼，將這個動機貫串整個樂章，使其結構更完整。到了樂章的最後一段，「片翼天使」最初響起時威風凜凜，然後漸漸扭曲：較早前出現的主題一個個疊加，反映錫菲羅斯開始了解自己的過去，內心感受非常複雜。最後一切都慢下來；這時錫菲羅斯重生，華東尼形容這個耳熟能詳的節拍「彷彿帶有宗教意味」，實在一語中的。

#### 煙火淹蓋的言語

第二樂章圍繞愛情、失落與未知。主角克勞德在艾麗絲和蒂法之間猶疑不決。樂章以「煙火淹蓋的言語」掀開序幕，講述克勞德與人約會，但約會卻突然完結。代表蒂法、克勞德和艾



#### NIBELHEIM INCIDENT

The first movement of the symphony is based on the villain of the game, Sephiroth. Jonne Valtonen, the arranger and orchestrator of this symphony, uses the 3-note motif of Sephiroth throughout the first movement as an element of structural integrity. In the final phase of the movement “The One-Winged Angel” emerges in all its glory, before gradually distorting as all of the earlier themes of the movement are gradually built on top of each other. This distortion is a reflection of the internal chaos Sephiroth is feeling, as he becomes aware of his past. In the end of the movement things slow down. As Sephiroth is reborn, the familiar pulse is heard “in an almost spiritual context”, an apt description by Jonne Valtonen.

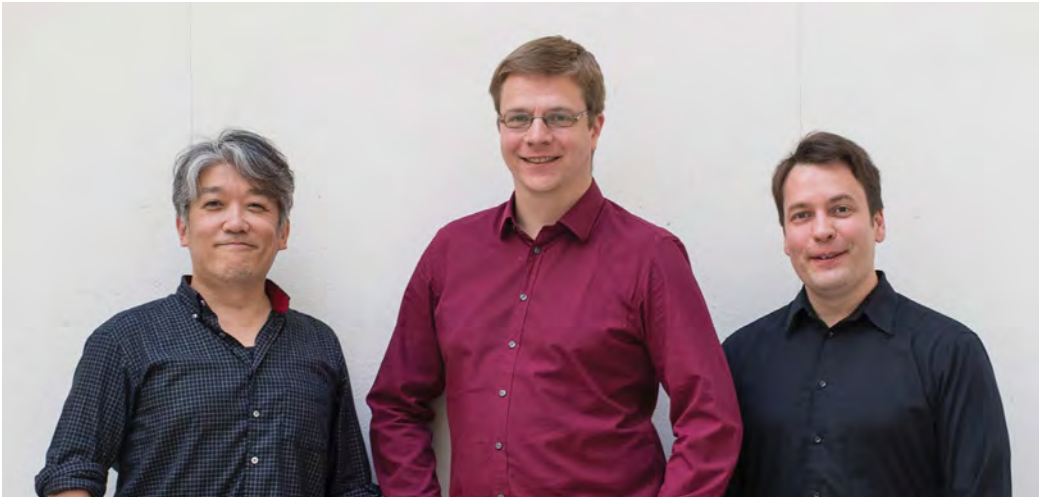
#### WORDS DROWNED BY FIREWORKS

The second movement of the symphony deals with the themes of love, loss and uncertainty. The hero Cloud is undecided in his feelings towards Aerith and Tifa. The movement begins with “Words Drowned by Fireworks”, a scene in which Cloud goes on a date that ends abruptly. The music moves forward representing the themes of Tifa, Cloud and Aerith—the three themes that are always present, each one featured up front as a main theme at certain phase of the movement. The melodies and

---

植松伸夫 Nobuo Uematsu

by Philippe Ramakers



這個音樂會的音樂是由浜渦正志(左)、華納莫(中)和華東尼獨家改編。The music for this concert is exclusively arranged by Masashi Hamauzu (left), Roger Wanamo (centre) and Jonne Valtonen. by Philippe Ramakers

麗絲的主題分別出現——這三個主題一直存在，而且會在樂章某些段落變成主要主題。只要當下的主要主題留有空間，其他主題的旋律和動機就會伺機浮現。

### 星球的危機

第三樂章以「倒數」掀開序幕，當中包括往後將會反覆出現的素材，貫串整個樂章。這裡的主線是善惡對決、克勞德與錫菲羅斯對決。金屬的碰撞聲呼應主題，刻劃最後的決鬥。各個角色都捲入戰役之中，各自的主題也通通混雜在一起。大戰過後是一片沉默，生命之泉開始流出，而且不斷壯大——是真的不斷壯大。正如華東尼解釋道：「事實上，不論力度還是整體管弦樂音響，最後的和弦聲音越響亮越好。聲音既宏亮又震撼，就如生命之泉般。」

樂曲剖析中譯：鄭曉彤

motifs from the other themes surface to the foreground whenever there is room available from the current main theme.

### THE PLANET'S CRISIS

"Countdown" is the beginning point of the third movement and it contains material that recurs throughout this movement as a unifying element. The great theme of this movement is that of good versus evil, Cloud versus Sephiroth. This final confrontation is reflected by the sounds of the metallic hits that echo the themes themselves. The themes of different characters are put into the mix as they engage in the battle. Silence emerges after the intense battle and from that silence the lifestream begins to flow, and to grow. And grow it does indeed, as Jonne Valtonen explains: "Actually, spectrally and orchestrally the chords in the end are as loud as physically possible. The sound is huge and overwhelming, much like the lifestream itself."

Programme notes by Mikko Laine

港樂  
HKPhil

首席贊助 Principal Patron



適合三歲或以上大小朋友  
For ages 3 or above

陳明恩  
Corinna  
Chamberlain  
主持 presenter

# CHRISTMAS for FAMILY 聖誕 家庭樂

Programme including music from film *Home Alone*, and Christmas favourites like *Jingle Bell Rocks*,  
*Let it Snow*, *O Holy Night*, etc. Gerard Salonga, conductor | Corinna Chamberlain, presenter |  
Hong Kong Philharmonic Chorus 節目包括《寶貝智多星》電影音樂·《Jingle Bell Rocks》·  
《Let it Snow》及《O Holy Night》等多首聖誕金曲。謝拉特·莎朗嘉，指揮 | 陳明恩，主持 | 香港管弦樂團合唱團

23 & 24 DEC 2017 Sat 8pm & Sun 3pm

加場 ADDITIONAL PERFORMANCE  
24 DEC 2017 Sun 8pm

\$480 \$380 \$280 \$180 香港文化中心音樂廳 Hong Kong Cultural Centre Concert Hall

門票於城市售票網發售 Tickets at URBTIX [www.urbtix.hk](http://www.urbtix.hk)

Tickets are also available through mobile ticketing app My URBTIX (Android and iPhone / iPad versions)

信用卡電話購票 Credit Card Telephone Booking 2111 5999 | 票務查詢 Ticketing Enquiries 3761 6661 | 節目查詢 Programme Enquiries 2721 2332

梵志登 音樂總監

Jaap van Zweden Music Director

香港管弦樂團由香港特別行政區政府資助，並為香港文化中心場地伙伴  
The Hong Kong Philharmonic Orchestra is financially supported by the Government of  
the Hong Kong Special Administrative Region and is a Venue Partner of the Hong Kong Cultural Centre

hkphil.org





# 朱俊熹 PHILIP CHU

指揮 Conductor

生於香港，朱俊熹於悉尼音樂學院完成指揮碩士課程，師承帕羅。他曾與多個音樂團體合作，包括大都會歌劇院、東京愛樂樂團、墨爾本交響樂團、昆士蘭交響樂團、港樂、澳洲布蘭登堡樂團、澳門交響樂團、Cantillation、皮奇古特歌劇院、悉尼愛樂合唱團等。作為合唱團團長，他曾為馬捷爾、梵志登、杜托華、謝敏替等指揮大師的演出擔任合唱指導。他現為香港管弦樂團合唱團團長。

除了為澳洲廣播公司錄製古典音樂，朱俊熹亦積極參與電玩遊戲與動漫的音樂錄製，近年作品包括《戰爭的迴響》（與澳洲Eminence交響樂團及Blizzards Entertainment聯合製作，並於全球發行）；《FINAL FANTASY》Type-0、Diablo III、Soulcalibur IV及V的原聲大碟，以及日本動漫《涼宮春日的消失》的原聲大碟。

Born in Hong Kong, Philip Chu completed a Master's degree in conducting at the Sydney Conservatorium of Music, under the tutelage of Imre Pallo. He has worked with ensembles such as The Metropolitan Opera, Tokyo Philharmonic Orchestra, Melbourne Symphony Orchestra, Queensland Symphony Orchestra, HK Phil, Australian Brandenburg Orchestra, Macau Symphony Orchestra, Cantillation, Pinchgut Opera and Sydney Philharmonic Choirs amongst others. As a chorus master, he has prepared choirs for conductors such as Lorin Maazel, Jaap van Zweden, Charles Dutoit and Gianluigi Gelmetti amongst others. He is currently Chorus Master for Hong Kong Philharmonic Chorus.

Apart from classical recordings for ABC Classics, Philip is also very active in recording music for video games and anime. Recent recordings have included *Echoes of War* with Eminence Symphony Orchestra in association with Blizzards Entertainment for international release, soundtracks of *FINAL FANTASY Type-0, Diablo III, Soulcalibur IV & V*, and the Japanese anime *Disappearance of Suzumiya Haruhi*.



柏斯琴行  
PARSONS MUSIC



Vincent  
**Bach**

*Holion*

*C.G. Conn*

**KING**

**BENGE**

**MARTIN**

**Selmer**

*Avanti*

*Armstrong*

**LEBLANC**

*Prelude*

**LUDWIG**

**MUSSER**

HENRI  
**SELMER**  
PARIS

*Fosati*  
PARIS

*LH*  
LYON & HEALY

**Scott Cao**

朱明江提琴工作室

**TOYAMA**



韋力奇  
**Maciek Walicki**

· 香港管弦樂團-長號手  
· CG CONN 長號代言人

全城優質管弦樂器  
盡在柏斯琴行

專業之選

香港管弦樂團長號手Maciek Walicki是C.G.Conn的支持者。全因其設計在音量和靈活性之間找到最佳平衡，無論演奏氣勢磅礴的交響樂曲，室樂或獨奏都可揮灑自如。

THE APPROXIMATE SOUND OF THE HORN SECTION OF THE SYMPHONY ORCHESTRA OF HONG KONG CONCERTS. THE APPROXIMATE SOUND OF THE HORN SECTION OF THE SYMPHONY ORCHESTRA OF HONG KONG CONCERTS. THE APPROXIMATE SOUND OF THE HORN SECTION OF THE SYMPHONY ORCHESTRA OF HONG KONG CONCERTS.



世界**七大**樂器零售商

[www.parsonsmusic.com](http://www.parsonsmusic.com)

Parsons Music 柏斯琴行

WeChat

分店遍佈全港

銅鑼灣 中半山 太古 北角 黃埔 紅磡 九龍塘 尖沙咀 鑽石山 油塘  
藍田 沙田 馬鞍山 將軍澳 荃灣 葵涌 荔枝角 大埔 屯門 東涌 元朗



# 張加全 MISCHA CHEUNG

鋼琴 Piano

PHOTO: Balint Hrotko

張加全生於一個瑞士華裔音樂家庭，現居蘇黎世。他在蘇黎世藝術大學師隨舒巴戈夫教授，繁重的表演事業將他帶到全球各地的音樂廳及音樂節演出。他曾在多個頂尖音樂廳獻藝，包括蘇黎世大會堂、科隆愛樂大廳、阿姆斯特丹的荷蘭皇家音樂廳、維也納音樂廳、台北的國家音樂廳、上海東方藝術中心和北京國家大劇院等。

張加全是歌舒詠鋼琴四重奏的成員，這個由四名鋼琴家組成的組合，憑藉演繹為四部鋼琴所編的精彩曲目而深獲好評。而他參演Merregnon Studios所執導的電子遊戲音樂會亦同樣成功。他是這個音樂會系列中深受觀眾歡迎的獨奏家，曾聯同倫敦交響樂團到日本巡演，又為此與芬蘭坦佩利愛樂樂團、波恩貝多芬交響樂團及波鴻交響樂團合演。最近他參與紐約現代藝術博物館委約的一個舞蹈節目，與著名編舞家巴赫澤提斯合作，負責現場音樂。2011年至2015年期間，他擔任德國迴聲獎獲獎組合Spark的鋼琴手，與組合一起進行多個大型巡演，並參與無數電台和電視製作及錄音，當中包括為德意志唱片和柏林經典的錄音。

張加全於蘇黎世藝術大學教授鋼琴及即興演奏，並獲委任為舒巴戈夫教授的大師班助理。

Mischa Cheung comes from a musical Swiss-Chinese family and currently lives in Zurich. He studied with Prof Konstantin Scherbakov at the Zurich University of the Arts and has taken up a busy career bringing him to many concert stages and festivals throughout the world. He has appeared at prestigious halls such as the Tonhalle Zürich, Philharmonie Köln, Concertgebouw Amsterdam, Konzerthaus Vienna, National Concert Hall Taipei, Shanghai Oriental Art Center and the National Center for the Performing Arts Beijing.

Mischa is a member of the Gershwin Piano Quartet, a highly praised ensemble of four pianists who perform spectacular arrangements on four pianos. Equally successful are the Game Concerts directed by the Merregnon Studios. In this concert series, he is a popular soloist and has toured Japan with the London Symphony Orchestra as well as appearing with the Tampere Philharmonic Orchestra, the Beethoven Orchestra Bonn and the Bochumer Symphoniker. Recently he was responsible for the live-soundtrack of a dance production commissioned by the Museum of Modern Art New York and directed by renowned choreographer Alexandra Bachzetsis. He was the pianist of the ECHO-award winning ensemble Spark from 2011 until 2015 and took part in extensive concert tours and numerous radio, TV and CD productions including recordings for Deutsche Grammophon and Berlin Classics.

Mischa teaches piano and improvisation at the Zurich University of the Arts and has also been appointed assistant to the masterclass of Prof Konstantin Scherbakov.

# 香港管弦樂團 HONG KONG PHILHARMONIC ORCHESTRA

## 願景 VISION

呈獻美樂 啟迪心靈

To inspire through the finest  
music-making



香港管弦樂團（港樂）被喻為亞洲最前列的古典管弦樂團之一。在為期44週的樂季中，樂團共演出超過一百五十場音樂會，把音樂帶給超過二十萬名觀眾。

梵志登是現今國際古典樂壇最炙手可熱的指揮之一，他自2012/13樂季正式擔任港樂音樂總監一職，至2022年夏季。此外，由2018/19樂季開始，梵志登大師將正式成為紐約愛樂音樂總監。

余隆由2015/16樂季開始被委任為首席客席指揮，任期為三年。

在梵志登幹勁十足的領導下，樂團在藝術水平上屢創新高，在國際樂壇上綻放異彩。

繼歐洲巡演（包括在維也納著名的金色大廳的演出及錄影）取得成功後，港樂在中國內地多個城市展開巡演。為慶祝香港特區成立二十週年，香港經濟貿易辦事處資助港樂，於今年四至五月前赴首爾、大阪、新加坡、墨爾本和悉尼歌劇院巡演。

梵志登帶領樂團，與一眾頂尖歌唱家，呈獻了華格納巨著《指環》首三部曲的歌劇音樂會和現場錄音，非凡的演出贏得了本地和海外觀眾、樂評人的讚譽。梵志登和港樂更獲北京國際音樂節邀請，參與了今年十月由薩爾斯堡復活節藝術節與北京攜手製作的《女武神》劇場版演出，這是對港樂的成績予以肯定。

近年和港樂合作過（或即將合作）的指揮家和演奏家包括：阿殊堅納西、杜托華、艾遜巴赫、葛納、侯夫、郎朗、馬友友、寧峰和王羽佳等。

**THE HONG KONG PHILHARMONIC ORCHESTRA** (HK Phil) is recognised as Asia's foremost classical orchestra. Presenting more than 150 concerts over a 44-week season, the HK Phil attracts more than 200,000 music lovers annually.

Jaap van Zweden, one of today's most sought-after conductors, has been the orchestra's Music Director since the 2012/13 concert season, a position he will continue to hold until 2022. Maestro van Zweden will also be the next Music Director of the New York Philharmonic from the 2018/19 season.

Yu Long was appointed Principal Guest Conductor of the HK Phil for a three-year period commencing with the 2015/16 season.

Under the dynamic leadership of Music Director Jaap van Zweden, the HK Phil has attained new heights of artistic excellence, garnering international critical acclaim.

Following on from the success of the European tour, which included a filmed concert from Vienna's famous Musikverein, the HK Phil has toured extensively within mainland China. In celebration of the 20<sup>th</sup> anniversary of the establishment of the HKSAR, and with support of the Hong Kong Economic and Trade Offices, the orchestra recently performed in Seoul, Osaka, Singapore, Melbourne and at the Sydney Opera House.

Jaap, the HK Phil, and a superb cast of soloists, have presented concert performances and recordings of the first three operas from Richard Wagner's epic *Ring* cycle. These have been enthusiastically endorsed by both audiences and critics at home and abroad, and in recognition of their quality, the orchestra and Jaap were invited to perform Wagner's *Die Walküre* in staged performances at the Beijing Music Festival this October in a co-production with the Salzburg Easter Festival.



PHOTO: Cheung Wai-lok

---

「香港管弦樂團的《指環》四部曲，標誌著這支亞洲優秀樂團已晉成熟。」《今日歌劇》

*"The Hong Kong Philharmonic's Ring cycle marks a coming of age for one of Asia's most established orchestras"*  
*Opera Now*

---

港樂積極推廣華裔作曲家的作品，除了委約新作，更已灌錄由作曲家譚盾和盛宗亮親自指揮其作品的唱片，由拿索斯唱片發行。此外，港樂的教育及社區推廣計劃一向致力將音樂帶到學校、醫院、戶外等不同場所，每年讓數以萬計兒童和家庭受惠。

太古集團自2006年起成為港樂的首席贊助，也是本團歷來最大的企業贊助。太古集團透過支持港樂，積極推廣藝術活動，在藝術水平上精益求精，並推動本地的文化參與和發展，以鞏固香港的國際大都會美譽。

港樂獲香港政府慷慨資助，以及首席贊助太古集團、香港賽馬會慈善信託基金和其他支持者的長期贊助，成為全職樂團，每年定期舉行古典音樂會、流行音樂會及推出廣泛而全面的教育和社區計劃，並與香港歌劇院、香港藝術節等團體合作。

港樂最初名為中英管弦樂團，後來於1957年改名為香港管弦樂團，並於1974年職業化。港樂是註冊慈善機構。

香港管弦樂團由香港特別行政區政府資助，亦為香港文化中心場地伙伴

香港管弦樂團首席贊助：太古集團

Conductors and soloists who have recently, or shortly will have, performed with the orchestra include Vladimir Ashkenazy, Charles Dutoit, Christoph Eschenbach, Matthias Goerne, Stephen Hough, Lang Lang, Yo-Yo Ma, Ning Feng and Yuja Wang.

The HK Phil promotes the work of Hong Kong and Chinese composers through an active commissioning programme, and has released recordings on the Naxos label featuring Tan Dun and Bright Sheng, each conducting their own compositions. Its acclaimed education and community engagement programmes in schools, hospitals and outdoor spaces, bring music into the hearts of tens of thousands of children and families every year.

The Swire Group has been the Principal Patron of the HK Phil since 2006. Through this sponsorship, which is the largest in the orchestra's history, Swire endeavours to promote artistic excellence, foster access to classical music, and stimulate cultural participation in Hong Kong, as well as to enhance Hong Kong's reputation as one of the great cities of the world.

Thanks to a significant subsidy from the Hong Kong Government and long-term funding from Principal Patron Swire, the Hong Kong Jockey Club Charities Trust and other supporters, the HK Phil now boasts a full-time annual schedule of core classical repertoire and innovative popular programming, extensive education and community programmes, and collaborations with, among others, Opera Hong Kong and the Hong Kong Arts Festival.

Originally called the Sino-British Orchestra, it was renamed the Hong Kong Philharmonic Orchestra in 1957 and became fully professional in 1974. The HK Phil is a registered charitable organisation.

The Hong Kong Philharmonic Orchestra is financially supported by the Government of the Hong Kong Special Administrative Region and is a Venue Partner of the Hong Kong Cultural Centre

SWIRE is the Principal Patron of the Hong Kong Philharmonic Orchestra

## 香港管弦樂團

# HONG KONG PHILHARMONIC ORCHESTRA

### 音樂總監

#### MUSIC DIRECTOR



梵志登  
Jaap van Zweden

### 首席客席指揮

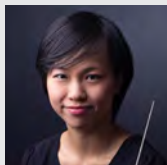
#### PRINCIPAL GUEST CONDUCTOR



余隆  
Yu Long

### 助理指揮

#### ASSISTANT CONDUCTORS



葉詠嫻  
Vivian Ip



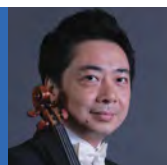
莎朗嘉  
Gerard Salonga

### 第一小提琴

#### FIRST VIOLINS



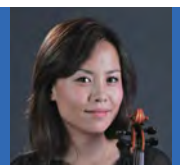
王敬  
樂團首席  
Jing Wang  
Concertmaster



梁建楓  
樂團第一副首席  
Leung Kin-fung  
First Associate  
Concertmaster



王亮  
樂團第二副首席 (署理)  
Wang Liang  
Second Associate  
Concertmaster (Acting)



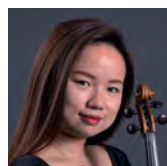
朱蓓  
樂團第三副首席  
Bei de Gaulle  
Third Associate  
Concertmaster



把文晶  
Ba Wenjing



程立  
Cheng Li



桂麗  
Gui Li



許致雨  
Anders Hui



余思傑  
Domas Juškys



李智勝  
Li Zhisheng



龍希  
Long Xi



毛華  
Mao Hua



梅麗芷  
Rachael Mellado



倪瀾  
Ni Lan



徐姮  
Xu Heng



張希  
Zhang Xi

## 第二小提琴 SECOND VIOLINS



● 范丁  
Fan Ting



■ 趙滢娜  
Zhao Yingna



▲ 梁文瑄  
Leslie Ryang Moonsun



方潔  
Fang Jie



何珈樑  
Gallant Ho Ka-leung



簡宏道  
Russell Kan Wang-to



劉博軒  
Liu Boxuan



冒異國  
Mao Yiguo



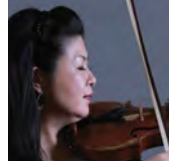
潘廷亮  
Martin Poon Ting-leung



華嘉蓮  
Katrina Rafferty



韋鈴木美矢香  
Miyaka Suzuki Wilson



冒田中知子  
Tomoko Tanaka Mao



黃嘉怡  
Christine Wong Kar-ye



周騰飛  
Zhou Tengfei

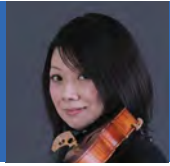
## 中提琴 VIOLAS



● 凌顯祐  
Andrew Ling



● 孫園  
Sun Yu



▲ 熊谷佳織  
Kaori Wilson



崔宏偉  
Cui Hongwei



付水淼  
Fu Shuimiao



洪依凡  
Ethan Heath



黎明  
Li Ming



林慕華  
Damara Lomdaridze



羅舜詩  
Alice Rosen



孫斌  
Sun Bin



張姝影  
Zhang Shu-ying

## 大提琴 CELLOS



● 鮑力卓  
Richard Bamping



■ 方曉牧  
Fang Xiaomu



▲ 林穎  
Dora Lam



陳屹洲  
Chan Ngat Chau



陳怡君  
Chen Yi-chun



霍添  
Timothy Frank



關統安  
Anna Kwan Ton-an



李銘蘆  
Li Ming-lu



宋泰美  
Tae-mi Song



宋亞林  
Yalin Song

- 首席 Principal
- 聯合首席 Co-Principal
- ◆ 副首席 Associate Principal
- ▲ 助理首席 Assistant Principal

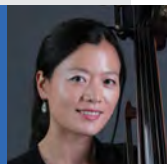
# 香港管弦樂團

# HONG KONG PHILHARMONIC ORCHESTRA

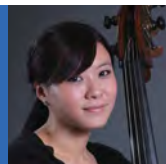
## 低音大提琴 DOUBLE BASSES



● 林達橋  
George Lomdaridze



◆ 姜馨來  
Jiang Xinlai



張沛垣  
Chang Pei-heng



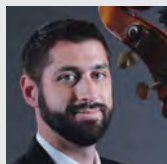
馮榕  
Feng Rong



費利亞  
Samuel Ferrer



林傑飛  
Jeffrey Lehmborg

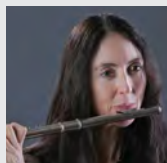


鮑爾菲  
Philip Powell

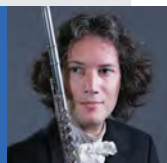


范戴克  
Jonathan Van Dyke

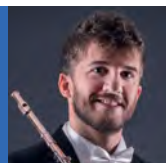
## 長笛 FLUTES



● 史德琳  
Megan Sterling



■ 盧韋歐  
Olivier Nowak



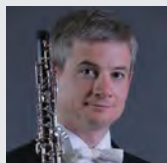
柯布魯  
Ander Erburu

## 短笛 PICCOLO



施家蓮  
Linda Stuckey

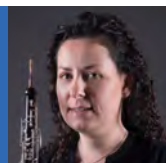
## 雙簧管 OBOES



● 韋爾遜  
Michael Wilson



■ 布若芙  
Ruth Bull



韋思芸  
Vanessa Howells

## 英國管 COR ANGLAIS

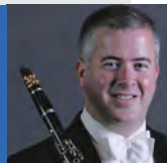


關尚峰  
Kwan Sheung-fung

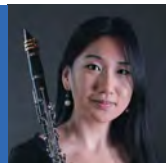
## 單簧管 CLARINETS



● 史安祖  
Andrew Simon



■ 史家翰  
John Schertle



劉蔚  
Lau Wai

## 低音單簧管 BASS CLARINET

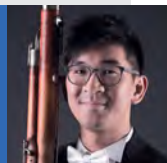


艾爾高  
Lorenzo losco

## 巴松管 BASSOONS



● 莫班文  
Benjamin Moermond



■ 陳劭桐  
Toby Chan



◆ 李浩山  
Vance Lee

## 低音巴松管 CONTRA BASSOON



崔祖斯  
Adam Treverton Jones



## 圓號 HORNS



●江蘭  
Jiang Lin



■柏如瑟  
Russell Bonifede



▲周智仲  
Chow Chi-chung



托多爾  
Todor Popstoyanov



李少霖  
Homer Lee



麥迪拿  
Jorge Medina

## 小號 TRUMPETS



●麥浩威  
Joshua MacCluer



■莫思卓  
Christopher Moyse



華達德  
Douglas Waterston



施樂百  
Robert Smith

## 長號 TROMBONES



●韋雅樂  
Jarod Vermette



韋力奇  
Maciek Walicki



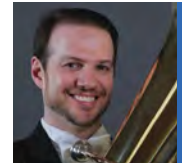
湯奇雲  
Kevin Thompson



韋彼得  
Pieter Wyckoff

## 低音長號 BASS TROMBONE

## 大號 TUBA



●雷科斯  
Paul Luxenberg

## 定音鼓 TIMPANI 敲擊樂器 PERCUSSION

## 豎琴 HARP

## 鍵盤 KEYBOARD



●龐樂思  
James Boznos



●白亞斯  
Aziz D. Barnard Luce



梁偉華  
Raymond Leung Wai-wa



胡淑徽  
Sophia Woo Shuk-fai



●史基道  
Christopher Sidenius



●葉幸沾  
Shirley Ip

## 特約樂手 FREELANCE PLAYERS

小提琴：吳宇彤  
Violin: Ng U-tong

中提琴：蔡書麟  
Viola: Choi Shu-lun

大提琴：羅安同  
Cello: Antonio Roig

多謝支持 THANK YOU FOR YOUR SUPPORT

感謝伙伴

THANK YOU PARTNERS

主要贊助 Major Funding Body

首席贊助 Principal Patron



「賽馬會音樂密碼教育計劃」獨家贊助  
The Jockey Club Keys to Music Education Programme  
is exclusively sponsored by



香港賽馬會慈善信託基金  
The Hong Kong Jockey Club Charities Trust

同心 同步 同進 RIDING HIGH TOGETHER

港樂提供靈活的贊助禮遇，為企業提供市場推廣、貴賓招待及實踐社會責任的平台。我們衷心感謝以下節目贊助：

The HK Phil offers flexible sponsorship benefits to help your brand achieve your marketing, hospitality and CSR objectives. Our deepest gratitude to our concert sponsors:

音樂會贊助 Concert Sponsors



香港董氏慈善基金會青少年聽眾計劃贊助  
The Tung Foundation Young Audience Scheme is sponsored by

The Tung Foundation  
香港董氏慈善基金會

黃金指環伙伴  
Gold Ring Partner



指環匯韻會員  
Ring Circle Members

Anonymous (2)  
Mimi & KH Chan  
interlude.hk  
Marga Group



義務核數師  
Honorary Auditor



義務法律顧問  
Pro-bono Legal Counsel



多謝支持 THANK YOU FOR YOUR SUPPORT

## 大師會

# MAESTRO CIRCLE

港樂大師會為會員提供全年樂季門票及品牌宣傳機會。港樂謹此向下列各大師會會員致謝：

The HK Phil's **MAESTRO CIRCLE** offers members year round ticket and branding benefits. We are grateful to the following Maestro Circle members:

### 白金會員 Platinum Members



### 鑽石會員 Diamond Members



### 綠寶石會員 Emerald Members

SF Capital Limited  
Samuel and Rose Jean Fang

### 珍珠會員 Pearl Members

Mr Eddy Tsang  
曾文忠先生



企業贊助查詢 CORPORATE SUPPORT ENQUIRIES:

[development@hkphil.org](mailto:development@hkphil.org) | 2721 2030

請支持香港管弦樂團「常年經費」  
及「學生票資助基金」  
PLEASE SUPPORT HK PHIL  
ANNUAL FUND AND  
STUDENT TICKET FUND



你的慷慨支持對我們尤為重要。民政事務局現正透過其藝術發展配對試驗計劃，按樂團本年度籌募所得之收入，發放一對一的額外配對撥款。你的一分一毫將帶來雙倍效益，讓我們繼續精益求精。

Now, more than ever, your contribution will make a difference to us. We are participating in the Art Development Matching Grant Pilot Scheme by the Home Affairs Bureau where contributions that exceed the amount raised in the past are matched dollar for dollar. This is a unique opportunity for you to double the impact of your gift and we are grateful for your support at this critical time.

支持港樂，兼享尊貴禮遇：

GIVE TODAY AND ENJOY BENEFITS LIKE:

HK\$100 或以上 or above	<ul style="list-style-type: none"> <li>正式收據作申請扣稅之用</li> </ul>	<ul style="list-style-type: none"> <li>Official receipt for tax deduction</li> </ul>
HK\$1,000 或以上 or above	<ul style="list-style-type: none"> <li>免費獲贈港樂會會籍，專享正價門票 85 折優惠</li> </ul>	<ul style="list-style-type: none"> <li>Free Club Bravo membership to enjoy 15% discount on regular tickets</li> </ul>
HK\$5,000 或以上 or above	<ul style="list-style-type: none"> <li>於港樂網站及音樂會場刊獲鳴謝</li> <li>獲邀出席獨家為港樂贊助人而設的講座及綵排參觀</li> </ul>	<ul style="list-style-type: none"> <li>Year-round acknowledgement in concert programmes and website</li> <li>Invitation to exclusive talks and rehearsals</li> </ul>
HK\$10,000 或以上 or above	<ul style="list-style-type: none"> <li>獲贈中休酒會券</li> </ul>	<ul style="list-style-type: none"> <li>Complimentary interval drink coupons at HK Phil Partners' Lounge</li> </ul>
HK\$50,000 或以上 or above	<ul style="list-style-type: none"> <li>獲邀出席樂季揭幕音樂會酒會</li> </ul>	<ul style="list-style-type: none"> <li>Invitation to Season Opening reception</li> </ul>

有關詳情及禮遇總覽，請參閱港樂網站 Details and full list of benefits available at [hkphil.org](http://hkphil.org)

網上捐款 DONATE ONLINE:

[hkphil.org/give](http://hkphil.org/give)



## 香港管弦樂團「常年經費」及「學生票資助基金」捐款表格 THE HK PHIL—ANNUAL FUND & STUDENT TICKET FUND REPLY FORM

本人/本公司現捐款予 I am/our company is pleased to make a donation to:

### 「常年經費」 ANNUAL FUND

HK\$5,000  HK\$10,000

捐款為港幣

other amount HK\$ \_\_\_\_\_

### 「學生票資助基金」 STUDENT TICKET FUND

HK\$5,000  HK\$10,000

捐款為港幣

other amount HK\$ \_\_\_\_\_

請以正楷填寫 Please fill in the following in BLOCK LETTERS

姓名 (先生/小姐/太太/女士/教授/博士) Name (Mr/Miss/Mrs/Ms/Prof/Dr)	港樂會會員編號 (如有) Club Bravo number (if applicable)
公司名稱 Company name	地址 Address
電話 Telephone	電郵 Email
收據抬頭 Name on receipt	

鳴謝為 Acknowledge as

無名氏 Anonymous

(中文)

(English)

如閣下不欲接收有關推廣及宣傳產品，請加上剔號。If you do not wish to receive any future marketing and promotional information from us, please check this box.

## 捐款方式 DONATION METHOD

支票 Cheque (抬頭請寫「香港管弦協會」 Payable to: 'The Hong Kong Philharmonic Society Ltd.')

請將填妥的捐款表格連同支票寄回香港九龍尖沙咀香港文化中心行政大樓八樓

Please mail the completed form with cheque to Level 8, Administration Building,  
Hong Kong Cultural Centre, Tsim Sha Tsui, Kowloon, Hong Kong

銀行匯款 Bank Transfer (請附上轉賬記錄 Please attach the deposit slip)

戶口名稱 Account name: The Hong Kong Philharmonic Society Limited

戶口號碼 Account number: 004-002-221554-001

銀行名稱 Bank name: The Hong Kong & Shanghai Banking Corporation Ltd.

銀行地址 Bank address: No. 1 Queen's Road Central Hong Kong

匯款代碼 Swift code: HSBCHKHKKH

信用卡 Credit card  American Express  MasterCard  VISA

請在我的信用卡戶口記賬

Please debit my credit card  
account with \$

信用卡號碼

Credit card  
number

持卡人姓名 Cardholder's name

發卡銀行 Issuing bank (只適用於 For MasterCard/VISA)

有效日期至 Valid until  
(MM/YY)

日期 Date

簽署 Signature

(信用卡用戶必須簽署，方能生效 This form must be signed to be valid)

## 樂團席位贊助 CHAIR ENDOWMENT

贊助港樂樂師的席位，協助香港的音樂邁向卓越。透過參與一系列的貴賓活動，贊助人可與港樂的首席樂手建立聯繫，同時可認識其他尊貴的贊助者，以及享有貴賓活動及與訪港的音樂家會面的獨家邀請。

Become a custodian of musical excellence in Hong Kong by supporting the chair of a HK Phil musician. Through a series of intimate events, you will forge a personal connection with a principal player and join an elite network of supporters that has exclusive access to events and visiting artists.

鮑力卓

Richard Bamping

大提琴首席

PRINCIPAL CELLO

鮑力卓的樂師席位由以下機構贊助：

The Musician's Chair for Richard Bamping  
is endowed by the following organisation:

**邱啟楨紀念基金**

**C. C. Chiu Memorial Fund**



查詢 ENQUIRIES:

[development@hkphil.org](mailto:development@hkphil.org)

2721 2030

多謝支持 THANK YOU FOR YOUR SUPPORT

## 港樂常年經費

# ANNUAL FUND

**常年基金**有助港樂與更多本地及國際知名藝術家合作，邀請出色的指揮家及演奏家來港演出，為觀眾呈獻更多元化的精彩音樂節目，基金同時亦提供資源讓港樂舉辦各項音樂教育及外展活動，與大眾分享美妙的管弦樂。

Donations to our **ANNUAL FUND** enable us to continue to present diverse and vibrant music with local and internationally renowned artists. They help us programme imaginatively and bring the most exciting conductors and soloists to Hong Kong. Supporting our Annual Fund also ensures that we can bring orchestral music into the community through our education and outreach activities.

### HK\$100,000 or above 或以上

Mr & Mrs E Chan • 陳建球伉儷  
Mr & Mrs David Fried • 湯德信伉儷  
Ms Doreen Lee & Mr Lawrence Mak •  
李玉芳女士及麥耀明先生  
Mrs Stella Lu  
Sin Wai Kin Foundation Limited •  
洗為堅基金有限公司  
Dr Kennedy Wong • 黃英豪博士  
Mr & Mrs S H Wong Foundation Limited •  
黃少軒江文璣基金有限公司

### HK\$50,000 - HK\$99,999

Mr & Mrs Lowell and Phyllis Chang • 張爾惠伉儷  
Scott Engle & Penelope Van Niel  
Mr & Mrs Fung Shiu Lam • 馮兆林先生夫人  
Elizabeth & Frank Newman  
Mr & Mrs Leung Lit On • 梁烈安伉儷  
Mr & Mrs Nicholas Sallnow-Smith  
Mr Edward Ng • 吳君孟先生  
Joy and John Slosar  
The Wang Family Foundation • 汪徵祥慈善基金  
Ivy and Frankie Yau  
Yu Hu Miao Florence • 余胡淼

### HK\$25,000 - HK\$49,999

Anonymous (1) • 無名氏 (1)  
Ms Carol Cheung, MH • 張雅麗女士  
Mr Edwin Choy • 蔡維邦先生  
Mr David Fung  
Dikan Solution Ltd  
Mr & Mrs Ko Ying • 高鷹伉儷  
Terence Francis Mahony  
Dr Mak Lai Wo • 麥禮和醫生  
Mr Y. S. Liu • 劉元生先生  
Mr George Long  
Craig Merdian & Yelena Zakharova  
Mr & Mrs A Ngan  
Mrs A M Peyer  
Mr Stephen Tan • 陳智文先生  
Ms Tse Chiu Ming • 謝超明女士  
Mr Steven Ying • 應琦弘先生

### HK\$10,000 - HK\$24,999

Anonymous (3) • 無名氏 (3)  
Abba Luxury - Deco Lau  
Dr & Mrs Barry Buttifant  
Dr Chan Edmond • 陳振漢醫生  
Mr & Mrs Joseph W N Cheung • 張宏毅律師及夫人  
Dr York Chow • 周一嶽醫生  
Edward Chow  
Mr Chu Ming Leong  
Dr & Mrs Robert John Collins  
Ms Andrea Fessler  
Dr & Mrs Carl Fung  
Dr Affandy Hariman • 李奮平醫生  
Bill & Peto Henderson  
Maurice Hoo • 胡立生  
Mr Edmond Huang and Ms Shirley Liu •  
黃翔先生及劉莉女士  
Ms Teresa Hung • 熊芝華老師  
Lance Lan  
Lee Tit Sun  
Mr Jan Leung & Ms Emily Chow • 梁贊先生及周嘉平女士  
Dr Thomas W.T. Leung • 梁惠棠醫生  
Dr Lilian Leong • 梁馮令儀醫生  
Ms Li Shuen Pui Agnes  
Ms Ming Lie, Barrister-at-law • 李萌大律師  
Ms Lo Kai-Yin • 羅啟妍女士  
Mr & Mrs William Ma • 馬樂楷先生夫人  
Christine Mar  
Prof John Malpas  
Nathalie & Gilles Martin  
Robyn Meredith  
Gerard & Taeko Millet  
Dr & Mrs Joseph Pang  
Dr & Mrs Wing Fuk Pang • 彭永福醫生夫人  
Poon Chiu Kim Raymond • 潘昭劍  
Dr Poon Yee Ling Eligina  
Mr & Mrs Anthony Rogers  
Mr & Mrs Paul Tsang • 曾健鵬先生夫人  
Dr Tsao Yen Chow • 曹延洲醫生  
Ms Mowana Tse • 謝慕蘊女士  
Sue Yang • 楊旭  
Ms Angela Yau • 邱聖音女士

### HK\$5,000 - HK\$9,999

Anonymous (2) • 無名氏 (2)  
Ms Karen Chan  
Dr Chi Hung Sunny Cheng • 鄭志鴻  
Bryan Cheng • 鄭鈞明  
Mrs Evelyn Choi  
Mr & Mrs Michael & Angela Grimsdick  
Gillis Heller & Sook Young Yeu  
Dr William Ho • 何兆煒醫生  
Dr Derek Leung  
Ms Li Xinyuan Cindy  
Montinly Limited  
Leland and Helen Sun • 孫立勳與孫林宣雁  
The Limit Busters  
Tse Wai Shun Susan • 謝惠純  
Mr & Mrs T Tso  
Patrick Wu

多謝支持 THANK YOU FOR YOUR SUPPORT

## 港樂學生票資助基金 STUDENT TICKET FUND

**學生票資助基金**支持港樂提供半價門票優惠予本港全日制學生，每港幣\$500的捐款便可讓六名學生欣賞到香港專業的管弦樂演出。港樂現時透過此基金每年提供逾12,000張學生優惠票。

The **STUDENT TICKET FUND** provides a half-price subsidy on concert tickets for local, full-time students. Supporting this fund with just \$500 will enable six students to experience the finest orchestral performances in Asia. This programme reaches over 12,000 students each year.

### HK\$100,000 or above 或以上

Mr & Mrs E Chan • 陳建球伉儷  
Mr & Mrs David Fried • 湯德信伉儷  
Hang Seng Bank • 恒生銀行  
Ms Doreen Lee & Mr Lawrence Mak •  
李玉芳女士及麥耀明先生  
Zhilan Foundation • 芝蘭基金會

### HK\$50,000 - HK\$99,999

Mr & Mrs Fung Shiu Lam • 馮兆林先生夫人  
Mr & Mrs Cheuk-Yan & Rotina Leung •  
梁卓恩先生夫人  
Shun Hing Education and Charity Fund Limited •  
信興教育及慈善基金有限公司  
Tin Ka Ping Foundation • 田家炳基金會

### HK\$25,000 - HK\$49,999

張立先生及張積馨女士  
Mr & Mrs Ko Ying • 高鷹伉儷  
Mr & Mrs Lam Ting Kwok Paul • 林定國先生夫人  
Mr & Mrs A Ngan  
Mr Stephen Tan • 陳智文先生

### HK\$10,000 - HK\$24,999

Anonymous (1) • 無名氏 (1)  
Mr & Mrs Herbert Au-yeung • 歐陽浩榮先生夫人  
Mr Iain Bruce  
James Chen Music Donation • 陳健華音樂基金  
Mr David Chiu  
Dr York Chow • 周一嶽醫生  
Dr Affandy Hariman • 李奮平醫生  
Lee Tit Sun  
Mr Jan Leung & Ms Emily Chow • 梁贊先生及周嘉平女士  
Dr Thomas W T Leung • 梁惠棠醫生  
Lo Kar Foon Foundation • 羅家驩慈善基金  
Mr Stephen Luk  
Dr Poon Yee Ling Eligina  
Mr & Mrs Stephen Suen • 孫漢明先生夫人  
Mr & Mrs Paul Tsang • 曾健鵬先生夫人  
Dr Tsao Yen Chow • 曹延洲醫生  
Sue Yang • 楊旭

### HK\$5,000 - HK\$9,999

Anonymous (1) • 無名氏 (1)  
Mrs Evelyn Choi  
Mr Philip Lawrence Choy  
Ho Rose  
Dr Ernest Lee • 李樹榮博士  
Dr Derek Leung  
羅紫媚 & Joe Joe  
Mr Michael MacLeod  
Eddy Poon • 潘漢青  
San Miguel Brewery Hong Kong Limited •  
香港生力啤酒廠有限公司  
Anna Stephenson & Alan Leigh  
Watchmusic Ltd  
Mr Alan Yue & Ms Vivian Poon • 余文偉先生夫人  
Xi Zhang • 張晞

網上捐款 DONATE ONLINE:

[hkphil.org/give](http://hkphil.org/give)



多謝支持 THANK YOU FOR YOUR SUPPORT

## 港樂特別計劃

## SPECIAL PROJECTS

### 信託基金 ENDOWMENT TRUST FUND

信託基金於一九八三年由以下機構贊助得以成立。

香港賽馬會慈善信託基金

The Hong Kong Jockey Club Charities Trust

置地有限公司

The Hongkong Land Group

怡和有限公司

Jardine, Matheson & Company Ltd

The Endowment Trust Fund was set up in 1983 with these initial sponsors.

滙豐銀行慈善基金

The Hongkong Bank Foundation

花旗銀行

Citibank, NA

香港董氏慈善基金會

The Tung Foundation

### 樂器捐贈 INSTRUMENT DONATION

商藝匯萃

此計劃由「商藝匯萃」發起及組織。

汪穗中先生 捐贈

艾曼·謝曼明 (1907) 小提琴·由冒田中知子小姐使用

張爾惠先生 捐贈

洛治·希爾 (c.1800) 小提琴·由王亮先生使用

鍾普洋先生 捐贈

多尼·哈達 (1991) 大提琴

史葛·羅蘭士先生 借出

安素度·普基 (1910) 小提琴·由張希小姐使用

Paganini Project

This project is initiated and organised by Business for Art Foundation.

Donated by Mr Patrick Wang

Emile Germain (1907) Violin, played by Ms Tomoko Tanaka Mao

Donated by Mr Lowell Chang

Lockey Hill (c.1800) Violin, played by Mr Wang Liang

Donated by Mr Po Chung

Dawne Haddad (1991) Violoncello

Loaned by Mr Laurence Scofield

Ansaldo Poggi (1910) Violin, played by Ms Zhang Xi

香港管弦協會婦女會 捐贈

所捐贈之罕有樂器

- 安域高·洛卡 (1902) 小提琴·由程立先生使用
  - 桑·巴蒂斯·維爾翁 (1866) 小提琴·由樂團第三副首席朱蓓小姐使用
  - 約瑟·加里亞奴 (1788) 小提琴
  - 卡洛·安東尼奧·狄斯多尼 (1736) 小提琴·由倪瀾先生使用
- 為支持「提升樂團樂器素質計劃」而捐贈之其他樂器
- 德國轉閥式小號兩支
  - 華格納大號乙套
  - 翼號乙支

為支持港樂首演《指環》四部曲，  
以下人士借出一套四支華格納大號

- Mr Pascal Raffy
- Paul and Leta Lau
- Ms Wincey Lam, Mr Raymond Wong, Mrs Rebecca Whitehead, Ms Angela Yau, Mrs Catherine Wong
- 應琦泓先生

劉元生慈善基金安排借出

G. B. 瓜達尼尼 (1760) 小提琴·由樂團首席王敬先生使用

Donated by The Ladies Committee of the Hong Kong Philharmonic Society

Rare instruments donated

- Enrico Rocca (1902) Violin, played by Mr Cheng Li
- Jean-Baptiste Vuillaume (1866) Violin, played by Mrs Bei de Gaulle, Third Associate Concertmaster
- Josephn Gagliano (1788) Violin
- Carlo Antonio Testore (1736) Violin, played by Mr Ni Lan

Other instruments donated in support of the "Instrument Upgrade and Enhancement Project"

- Two German Rotary Trumpets
- A set of Wagner Tubas
- A Flugelhorn

A set of Wagner Tubas is loaned by these sponsors in support of the HK Phil premiere of the *Ring Cycle*

- Mr Pascal Raffy
- Paul and Leta Lau
- Ms Wincey Lam, Mr Raymond Wong, Mrs Rebecca Whitehead, Ms Angela Yau, Mrs Catherine Wong
- Mr Steven Ying

A loan arranged by the Y. S. Liu Foundation

G. B. Guadagnini (1760) Violin, played by Mr Jing Wang, Concertmaster

多謝支持 THANK YOU FOR YOUR SUPPORT

## 香港管弦樂團籌款音樂會

YOUR HK PHIL · OUR COMMUNITY— HONG KONG

## PHILHARMONIC ORCHESTRA FUNDRAISING CONCERT 2017

### 籌備委員會 ORGANISING COMMITTEE

聯合主席 CO-CHAIRS

吳君孟先生 Mr Edward Ng

應琦泓先生 Mr Steven Ying

港樂籌款委員會主席

THE HK PHIL FUNDRAISING COMMITTEE CHAIR

蔡關穎琴律師 Mrs Janice Choi, MH, JP

委員 MEMBERS

賀羽嘉女士 Ms Daphne Ho

李萌大律師 Ms Ming Lie, Barrister-at-law

謝勤 TK Garbo

邱聖音女士 Ms Angela Yau

黃文顯先生 Mr Raymond Wong

### 贊助者 SPONSORS

#### HK\$150,000 or above 或以上

無名氏 Anonymous\*

香港中華總商會

The Chinese General Chamber of Commerce

李萌大律師 Ms Ming Lie, Barrister-at-law

Rightmind International Nursery & Kindergarten, KinderU Suzuki Music Academy & Ms Rosanne Wong

#### HK\$100,000 - HK\$149,999

陳嘉何 Chan Ka-Ho

黃關林先生 Mr Huang Guan Lin

蘇彰德先生 Mr Douglas So\*

韻然創作有限公司 Joanne Clara Creations Limited

姚琮玉女士 Ms Ida Yao

#### HK\$50,000 - HK\$99,999

無名氏 Anonymous\*

The D. H. Chen Foundation\*

Dr Ho Hung Kwong, Duncan

御峰理財有限公司 Noble Apex Advisors Ltd.\*

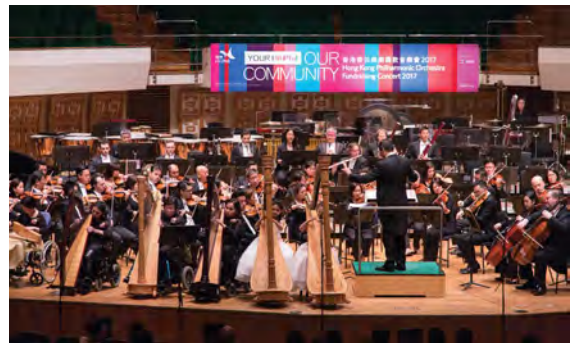
Raymond Industrial Limited

太古集團慈善信託基金 The Swire Group Charitable Trust

眼科黃俊華醫生先生夫人 Dr & Mrs Wong Chun Wah Alex Mr Wilson K. L. Wong\*

\* 眾籌贊助者

Community Support Fund Sponsors



#### HK\$10,000 - HK\$49,999

浩德融資有限公司 Altus Capital Limited\*

Amicorp Hong Kong Limited\*

Mr & Mrs Conrad Chan\*

Chan Yau Sin

鄭錦榮 Kwong Kam Wing Anthony\*

胡曉明 Herman S. M. Hu

Ms Carol Kim & Mr Juwan Lee\*

林成棟博士，富善國際資產管理（香港）有限公司

Dr Lilian C. H. Leong

Dr The Hon David K P Li\*

HABITŪ\*

陸世康先生及馮海莉女士 Mr Victor Luk & Mrs Sabrina Fung Luk

Aliena Wong Mak\*

莫文輝先生及張慧女士 Monica & Mansfield Mok

潘廣強先生 Mr Poon Kwong Keung

冼雅恩先生 Mr Benedict Sin Nga-yan

曾浩良先生夫人 Mr & Mrs Tennessee H. L. Tsang

Ying Lee Music Company Limited

#### 其他 Others

Benson Crab & Wine Limited\* · Adriel Chan · Claudia Cheung · Mrs Young Joo Paik Cheung · Dr Cho Hung Wai · 曹希銓博士 Dr Paul Cho · 香港天津工商專業婦女委員會 Hong Kong Tianjin Business and Professional Women Association · Dr Kelvin Chow · Ms Chua Lai Pun · 方津生 David Fang\* · Hong Kong Harp Chamber · 許饒小珍 · Dr Ku Ka Ming · Dr Calvin Lai · Hera Lam · Ms Lau Chui Wah, Tsoi Hing Lai, Ngai Chi Yung · 劉津津 Jun Jun Lau · Dr Lee Dae Hyun · Lee Hyang Ran · Ms Lee Ju Yeon · 耳鼻喉科李立言醫生 Dr Lee Lip Yen Dennis · Peric Lee\* · Constance Lin · 羅念慈 Lo Nim Chi · Luk Oi-yi · Dr Ian Mak · Pacific Rim Investment Management Ltd · Ilhyock Shim · Ms Tobe Shum · Harold Dai Hoe Sun\* · T. Jo, Caitlyn, Theodore · 謝勤 TK Garbo · Dr Zion To · Uppingham School · Catherine C. H. Wong\* · 眼科邱俊源醫生 Ophthalmologist Dr Jackey Yau Chun Yuen · Dr Zenon Yeung

由於支持者眾多，未能在此盡錄，港樂在此謹對所有支持此籌款音樂會的人士及機構致以謝意。

The HK Phil would like to express heartfelt gratitude to all those who have supported this fundraising concert. Owing to the large number of supporters, we are unable to list them all here.

青少年聽眾計劃  
YOUNG AUDIENCE SCHEME

2017-2018



贊助 Sponsored by

The Tung Foundation  
香港董氏慈善基金會

立即成為「青少年聽眾計劃」會員  
Come Join Young Audience Scheme NOW

免費欣賞一場或以上港樂音樂會、港樂音樂會門票優惠及更多！  
Enjoy at least ONE HK Phil concert for free, discounted tickets and more!

由香港管弦樂團主辦，香港董氏慈善基金會贊助的「青少年聽眾計劃」是為本地6至25歲全日制學生而設的音樂教育及觀眾拓展計劃。

Presented by the HK Phil and sponsored by The Tung Foundation, the Young Audience Scheme is a music education and audience development programme for local full-time students aged from 6 to 25.

# YOUNG AUDIENCE SCHEME ENROLMENT FORM

## 青少年聽眾計劃參加表格



請以英文正楷填寫 Please print in English BLOCK letters

### 個人資料 Personal Details

姓名 Name (英文 English)				(中文 Chinese)	
出生日期 Date of Birth	年 YY	月 MM	日 DD	年齡 Age	性別 Sex
電郵地址 Email Address	必須填寫一個電郵地址，樂團將以此電郵發放通訊及活動資料。 You must provide an email address to receive our latest news.				
地址 Address (英文 English)					
電話 Telephone (住宅 Home)				(手提 Mobile)	
學校名稱 School Name (英文 English)	如非經學校報名，請附上學生證明文件。 Please provide student identification if you are not enrolling via a school.				
就讀班級 Class	<input type="checkbox"/> 小學 Primary		<input type="checkbox"/> 中學 Secondary		<input type="checkbox"/> 大專院校 Tertiary

### 會籍 Membership

會籍有效期 Membership Period: 1/9/2017 – 31/8/2018

<input type="checkbox"/> 新會員 New Member	會費 Membership Fee: HK\$60	<input type="checkbox"/> 現有會員 Existing Member	會費 Membership Fee: HK\$50
		會員編號 Membership Number:	_____

### 付款方法 Payment

<input type="checkbox"/> 支票 By Cheque			
銀行 Bank	支票號碼 Cheque No.		
支票抬頭:「香港管弦協會」Payee: 'The Hong Kong Philharmonic Society Limited'			
支票背面請寫上會員姓名及監護人聯絡電話。Please write member's name and guardian's contact number on the back.			
<input type="checkbox"/> 現金 By Cash			
親自前往本樂團辦事處繳交。Make a cash payment at our office during office hours. (辦公時間 Office hours: 星期一至星期五 Mon-Fri 9:00am – 12:30pm, 2:00pm – 5:45pm, 公眾假期除外 except public holidays)			
<input type="checkbox"/> 銀行存款 / 銀行轉賬 By Bank Deposit / Bank Transfer			
現金存入/轉賬至「香港管弦協會」戶口(匯豐銀行002-221554-001)，請連同轉賬收據副本交回本會。 Deposit or transfer payment into 'The Hong Kong Philharmonic Society Limited' account (HSBC Account No. 002-221554-001). Please provide a photocopy of ATM customer advice / pay-in slip.			
<input type="checkbox"/> 信用卡 By Credit Card			
<input type="checkbox"/> VISA 卡 / VISA Card	<input type="checkbox"/> 萬事達卡 / Master Card	<input type="checkbox"/> 美國運通卡 / American Express	
請在我的信用卡戶口記賬港幣 Please debit my credit card amount with HK\$			
信用卡號碼 Credit Card No.	持卡人姓名 Cardholder's Name		
有效日期至 Expiry Date	發卡銀行 Issuing Bank		
簽署 Signature	日期 Date		

收到表格後，我們將於四星期內郵寄會員證及有關資料至府上。

Your membership card and information will be sent out within 4 weeks after receipt of enrolment form.

所有申請者的個人資料只作是次報名、統計、日後聯絡及宣傳香港管弦樂團活動之用，而填寫此表亦屬自願性質。

The personal data provided in this form will be used by the HK Phil for enrolment, statistics, correspondence and publicity purposes.

# 香港管弦協會有限公司

# THE HONG KONG PHILHARMONIC SOCIETY LIMITED

## 名譽贊助人

行政長官

林鄭月娥女士

## HONORARY PATRON

THE CHIEF EXECUTIVE

The Hon Mrs Carrie Lam Cheng Yuet-ngor, GBM, GBS

## 董事局

劉元生先生  
主席

蘇澤光先生  
蔡關穎琴律師  
副主席

冼雅恩先生  
司庫

陳錦標博士  
邱詠筠女士  
岑明彥先生  
霍經麟先生  
湯德信先生  
馮鈺斌博士  
郭永亮先生  
梁卓偉教授  
吳君孟先生  
蘇兆明先生  
蘇彰德先生  
詩柏先生  
董溫子華女士  
楊俊偉博士  
楊顯中博士  
應琦泓先生

## BOARD OF GOVERNORS

Mr Y. S. Liu, MH  
CHAIR

The Hon Jack So, GBM, GBS, OBE, JP  
Mrs Janice Choi, MH, JP  
VICE-CHAIRS

Mr Benedict Sin Nga-ya  
TREASURER

Dr Joshua Chan Kam-biu  
Ms Winnie Chiu, JP  
Mr David Cogman  
Mr Glenn Fok  
Mr David L. Fried  
Dr Patrick Fung Yuk-bun, JP  
Mr Andy Kwok Wing-leung  
Prof Gabriel Leung, GBS, JP  
Mr Edward Ng  
Mr Nicholas Sallnow-Smith  
Mr Douglas So  
Mr Stephan Spurr  
Mrs Harriet Tung  
Dr Anthony Yeung  
Dr John Yeung Hin-chung, SBS, OBE, JP  
Mr Steven Ying

## 財務委員會

冼雅恩先生  
主席

## FINANCE COMMITTEE

Mr Benedict Sin Nga-yan  
CHAIR

## 籌款委員會

邱詠筠女士  
蔡關穎琴律師  
聯合主席

## FUNDRAISING COMMITTEE

Ms Winnie Chiu, JP  
Mrs Janice Choi, MH, JP  
CO-CHAIRS

## 聽眾拓展委員會

蘇兆明先生  
主席

## AUDIENCE DEVELOPMENT COMMITTEE

Mr Nicholas Sallnow-Smith  
CHAIR

## 信託基金委員會

冼雅恩先生  
主席

劉元生先生  
蘇彰德先生  
楊顯中博士

## ENDOWMENT TRUST FUND BOARD OF TRUSTEES

Mr Benedict Sin Nga-ya  
CHAIR

Mr Y. S. Liu, MH  
Mr Douglas So  
Dr John Yeung Hin-chung, SBS, OBE, JP

## 執行委員會

劉元生先生  
主席

蘇澤光先生  
蔡關穎琴律師  
冼雅恩先生  
蘇兆明先生  
岑明彥先生

## EXECUTIVE COMMITTEE

Mr Y. S. Liu, MH  
CHAIR

The Hon Jack So, GBM, GBS, OBE, JP  
Mrs Janice Choi, MH, JP  
Mr Benedict Sin Nga-yan  
Mr Nicholas Sallnow-Smith  
Mr David Cogman

## 行政人員 MANAGEMENT

麥高德  
行政總裁

Michael MacLeod  
CHIEF EXECUTIVE

### 行政及財務部

### ADMINISTRATION AND FINANCE

何黎敏怡  
行政及財務高級總監

Vennie Ho  
SENIOR DIRECTOR OF ADMINISTRATION  
AND FINANCE

李康銘  
財務經理

Homer Lee  
FINANCE MANAGER

李家榮  
資訊科技及項目經理

Andrew Li  
IT AND PROJECT MANAGER

吳慧妍  
人力資源經理

Annie Ng  
HUMAN RESOURCES MANAGER

郭文健  
行政及財務助理經理

Alex Kwok  
ASSISTANT ADMINISTRATION AND  
FINANCE MANAGER

陳碧瑜  
行政秘書

Rida Chan  
EXECUTIVE SECRETARY

蘇碧華  
行政及財務高級主任

Vonee So  
SENIOR ADMINISTRATION AND  
FINANCE OFFICER

李穎欣  
資訊科技及行政主任

Apple Li  
IT AND ADMINISTRATIVE OFFICER

黃雅琪  
行政助理

Katie Wong  
ADMINISTRATIVE ASSISTANT

朱殷樂  
藝術行政實習生

Kaycee Chu  
ARTS ADMINISTRATION TRAINEE

梁錦龍  
辦公室助理

Sammy Leung  
OFFICE ASSISTANT

### 藝術策劃部

### ARTISTIC PLANNING

林丰  
藝術策劃總監

Fung Lam  
DIRECTOR OF ARTISTIC PLANNING

趙桂燕  
教育及外展經理

Charlotte Chiu  
EDUCATION AND OUTREACH MANAGER

王嘉瑩  
藝術策劃經理

Michelle Wong  
ARTISTIC PLANNING MANAGER

林奕榮  
教育及外展助理經理

Lam Yik-wing  
ASSISTANT EDUCATION AND  
OUTREACH MANAGER

潘盈慧  
藝術策劃助理經理

Christine Poon  
ASSISTANT ARTISTIC PLANNING MANAGER

張慧紅  
教育及外展主任

Miller Cheung  
EDUCATION AND OUTREACH OFFICER

### 發展部

### DEVELOPMENT

安嘉莉  
發展總監

Kylie Anania  
DIRECTOR OF DEVELOPMENT

李穎勤  
發展經理

Marinella Li  
DEVELOPMENT MANAGER

曾婷欣  
發展經理

Renee Tsang  
DEVELOPMENT MANAGER

陳沛慈  
發展助理經理

Daphne Chan  
ASSISTANT DEVELOPMENT MANAGER

陳柏濤  
發展助理經理

Desmond Chan  
ASSISTANT DEVELOPMENT MANAGER

黎可澄  
發展主任

Cherry Lai  
DEVELOPMENT OFFICER

### 市場推廣部

### MARKETING

鄭禧怡  
市場推廣總監

Meggy Cheng  
DIRECTOR OF MARKETING

趙綺鈴  
市場推廣經理

Chiu Yee Ling  
MARKETING MANAGER

余寶茵  
編輯

Yee Po Yan  
PUBLICATIONS EDITOR

劉淳欣  
市場推廣助理經理

Sharen Lau  
ASSISTANT MARKETING MANAGER

何惠嬰  
票務主管

Agatha Ho  
BOX OFFICE SUPERVISOR

李結婷  
客務主任

Michelle Lee  
CUSTOMER SERVICE OFFICER

潘穎詩  
市場推廣主任

Renee Poon  
MARKETING OFFICER

### 樂團事務部

### ORCHESTRAL OPERATIONS

鄭浩然  
樂團事務總監

Kenny Chen  
DIRECTOR OF ORCHESTRAL OPERATIONS

陳國義  
舞台經理

Steven Chan  
STAGE MANAGER

何思敏  
樂譜管理

Betty Ho  
LIBRARIAN

黎樂婷  
樂團人事經理

Erica Lai  
ORCHESTRA PERSONNEL MANAGER

陳雅穎  
樂團事務助理經理

Wing Chan  
ASSISTANT ORCHESTRAL OPERATIONS  
MANAGER

李馥丹  
樂團事務助理經理

Fanny Li  
ASSISTANT ORCHESTRAL OPERATIONS  
MANAGER

蘇近邦  
運輸及舞台主任

So Kan Pong  
TRANSPORTATION AND STAGE OFFICER

港樂  
HKPhil

首席贊助 Principal Patron



# A VIENNESE NEW YEAR

## 維也納新年音樂會



安格斯  
David Angus  
指揮 Conductor



王致仁  
Chiyan Wong  
鋼琴 Piano

**30 & 31 DEC 2017 Sat 8pm & Sun 3pm**

\$480 \$380 \$280 \$180 香港文化中心音樂廳 Hong Kong Cultural Centre Concert Hall

門票於城市售票網發售 Tickets at **URBTIX** [www.urbtix.hk](http://www.urbtix.hk)

亦可透過流動機票應用程式 My URB TIX (Android 及 iPhone / iPad 版) 購票  
Tickets are also available through mobile ticketing app My URB TIX (Android and iPhone / iPad versions)

信用卡電話購票 Credit Card Telephone Booking **2111 5999** | 票務查詢 Ticketing Enquiries **3761 6661** | 節目查詢 Programme Enquiries **2721 2332**

梵志登 音樂總監  
Jaap van Zweden Music Director

香港管弦樂團由香港特別行政區政府資助，並獲香港文化中心樂隊支持  
The Hong Kong Philharmonic Orchestra is financially supported by the Government of  
the Hong Kong Special Administrative Region and is a Venue Partner of the Hong Kong Cultural Centre

[hkphil.org](http://hkphil.org)

**TOM LEE**  
*Music*

# 通利琴行

**密密買！密密送！**

BUY MORE GET MORE



Fender®

YAMAHA

SAUTER

Martin & Co.  
EST. 1833

Ibanez

QUALITY  
Taylor  
GUITARS

Pearl®

HENRI  
SELMER  
PARIS

ADAMS

PR®  
PAUL  
REED  
SMITH  
GUITARS

Karl Höfner

TAMA

Roland

AKG  
HARMAN

LYRE  
BUFFET  
CRAMPON  
PARIS

KORG

Zildjian

ERNEST  
BALLADY  
MUSICMAN

drum!  
DW



BOSS®

PETROF®

STEINWAY & SONS

JUPITER

# HOLIDAY SALE

了解更多

Many More Brands in Stores!  
[www.tomleemusic.com.hk](http://www.tomleemusic.com.hk)

Tom Lee Music 通利琴行

tomleemusic.hk

通利琴行 TomLeeMusic



尖沙咀 · 奧海城 · 九龍灣 · 紅磡 · 灣仔 · 銅鑼灣 · 太古 · 香港仔 · 西環 · 沙田 · 將軍澳 · 荃灣 · 青衣 · 屯門 · 元朗 · 大埔 · 澳門