

港樂
HKPhil

首席贊助 Principal Patron



香港管弦樂團

HONG KONG PHILHARMONIC ORCHESTRA

Jaap van Zweden Music Director

SWIRE SUNDAY FAMILY



太古周日家+賞



差利·卓別靈

CHAPLIN

GOLD RUSH 尋金熱

FOR KIDS



15.5.2016 Sun 3pm 香港文化中心音樂廳 Hong Kong Cultural Centre Concert Hall

梵志登 Jaap van Zweden
音樂總監 Music Director

余隆 Yu Long
首席客席指揮 Principal Guest Conductor

HKPHIL.ORG

KAWAI

專業 · 冠軍之選



Sale

KU-S19 月供 **\$478** x 48期
日本製 K-300 月供 **\$998** x 48期



KAWAI 愛心送暖 · 愛心大使
鋼琴王子 Phoebus Chan

多位鋼琴家，包括李嘉齡、馬聰、劉活石、盧嘉、Phoebus Chan (排名不分先後)，化身愛心大使，全力支持KAWAI愛心送暖行動，支援慈善機構，詳情請瀏覽柏斯琴行網站 www.parsonsmusic.com

總代理 General Agent



柏斯琴行
PARSONS MUSIC



差利·卓別靈

CHAPLIN

GOLD RUSH 尋金熱 FOR KIDS

冠名贊助 Title Sponsor



《尋金熱》 Gold Rush (1925)

-88'

導演：差利·卓別靈
音樂：原裝配樂為差利·卓別靈所作〔1925〕
布洛克編曲〔2007〕
Director: Charlie Chaplin
Music: Original score by Charlie Chaplin (1925)
Arranged by Timothy Brock (2007)

史卓貝，指揮
Frank Strobel, conductor

藝穗默劇實驗室
Fringe Mime and
Movement Laboratory

FILMPHILHARMONIC EDITION



Film by courtesy of ROY EXPORT COMPANY S.A.S.,
Music by courtesy of BOURNE MUSIC CO.

© Roy Export Company S.A.S.



P. 7

P. 11

P. 13

請勿飲食
No eating or drinking

請勿拍照、錄音或錄影
No photography, recording
or filming

請關掉手提電話及其他電子裝置
Please turn off your mobile phone
and other electronic devices

演奏期間請保持安靜
Please keep noise to
a minimum during the
performance

請留待整首樂曲完結後
才報以掌聲鼓勵
Please reserve your applause
until the end of the entire work

如不欲保留場刊，請於完場後放回
場地入口以便回收
If you don't wish to take this printed
programme home, please return it to
the admission point for recycling

J A A P

van ZWEDEN

THE EIGHTH MUSIC DIRECTOR
OF THE HONG KONG PHILHARMONIC ORCHESTRA
香港管弦樂團第八任音樂總監

“Among Asian orchestras, it’s the best...
With a great conductor like Jaap,
it doesn’t make any difference to be
playing here or in Europe.”

YUJA WANG, JUNE 2015

“The orchestra (HK Phil) responded
to van Zweden’s grip on the soul of
the piece with an impressively
disciplined performance.”

SAM OLLUVER, SOUTH CHINA MORNING POST

- Announced as the next Music Director of the New York Philharmonic. Will continue as Music Director of the HK Phil until at least the summer of 2019

獲紐約愛樂委任為下任音樂總監。將繼續擔任港樂音樂總監至2019年夏季。

- *Musical America’s* Conductor of the Year for 2012
《音樂美國》2012年度指揮家

- Music Director of the Dallas Symphony Orchestra
達拉斯交響樂團音樂總監

- Works regularly with the Chicago Symphony, Cleveland Orchestra, Philadelphia Orchestra, New York Philharmonic and London Philharmonic orchestras. Recently conducted Berlin Philharmonic and Vienna Philharmonic.

與芝加哥交響樂團、克里夫蘭管弦樂團、費城管弦樂團、紐約愛樂及倫敦愛樂合作。最近受邀指揮柏林愛樂樂團及維也納愛樂樂團。

- The youngest Concertmaster ever of the Royal Concertgebouw Orchestra
荷蘭皇家音樂廳樂團史上最年輕團長

HK Phil

- Busy performance schedule of over 150 performances reaching 200,000+ listeners each season 演出頻繁，每季上演逾一百五十場音樂會，吸引聽眾達二十多萬人
- Large-scale symphonic event *Swire Symphony Under The Stars*, bringing classical music to the community 年度大型交響演奏 — 太古「港樂·星夜·交響曲」將音樂帶到社區
- Comprehensive education and outreach programmes to invest in Hong Kong’s musical future 全面的音樂教育計劃，為香港未來播下音樂種子
- Touring around the world to promote Hong Kong as Asia’s World City 巡迴世界各地演出，弘揚香港—亞洲國際都會

林木

志登

〔梵志：清淨之志，登：達到〕



感謝伙伴

SALUTE TO OUR PARTNERS

香港管弦樂團衷心感謝以下機構的慷慨贊助和支持：

The Hong Kong Philharmonic Orchestra would like to express heartfelt thanks to the Partners listed below for their generous sponsorship and support:

主要贊助 Major Funding Body



首席贊助 Principal Patron



大師席位贊助 Maestro Podium Sponsor



節目贊助 Programme Sponsors



女武神伙伴 Die Walküre Partners



「賽馬會音樂密碼教育計劃」獨家贊助
The Jockey Club Keys to Music Education Programme
is exclusively sponsored by



香港賽馬會慈善信託基金
The Hong Kong Jockey Club Charities Trust
同心·同步·同進 *RIDING HIGH TOGETHER*

香港管弦樂團—華僑永亨銀行社區音樂會贊助
Hong Kong Philharmonic Orchestra -
OCBC Wing Hang Community Concert is sponsored by



華僑永亨銀行
OCBC WING HANG

演藝交響樂團贊助
HKAPA Side-by-Side Concert
is sponsored by

利銘澤黃瑤璧慈善基金
Drs Richard Charles &
Esther Yewpick Lee Charitable Foundation

香港管弦樂團駐團作曲家及新作委約計劃贊助
Hong Kong Philharmonic Orchestra Composer-in-
Residence Programme and the Commissioning of
New Works are sponsored by

香港董氏慈善基金會青少年聽眾計劃贊助
The Tung Foundation Young Audience Scheme
is sponsored by



何鴻毅家族基金
THE ROBERT H. N. HO
FAMILY FOUNDATION

The Tung Foundation
香港董氏慈善基金會

以公司英文名稱排序
In alphabetical order of company name

贊助查詢 *SPONSORSHIP ENQUIRIES*

2721 2030 | development@hkphil.org



弦
諾

《尋金熱》 Gold Rush (1925)



1898年阿拉斯加偏遠山區出現一股尋金熱潮，世界各地的冒險家都湧到育空河尋金。其中一個就是差利·卓別靈，不過事實證明，他並不是出色的尋金者！

在一場暴風雪中，他誤闖成功的尋金者拉森的小屋。拉森不單掘金，有時他更會盜金。在那裡差利又遇上另一尋金者大佬占，差利和大佬占派拉森出去求救。但拉森遲遲未返，他們餓得神智不清，竟然把皮靴吃掉！

後來差利和大佬占在大城市中再次相遇。他們仍是貧窮與飢餓，於是決定回去育空河尋金。他們會發現黃金嗎？差利可以與愛人一起生活嗎？

這套默片播放時，你會聽到描繪暴風、打鬥、愛情和舞會的配樂；模仿打嗝、飢餓、睡覺、進食、幻覺的樂段；以及反映思疑、侮辱、傲慢和無情的樂段。仔細聆聽，會在音樂中發現知名歌曲「For He's A Jolly Good Fellow」的旋律呢！

Back in 1898 there was a gold rush; men from everywhere in the world went to a remote part of Alaska to dig for gold in the mountains around the Yukon River. One of those men is Charlie, who turns out not to be very good at being a "prospector" for gold!

During a snowstorm he takes shelter in a hut which belongs to another, much more successful prospector called Larsen. Larsen doesn't just dig for gold. Sometimes he steals it. Another prospector is there, Big Jim, and he and Charlie send Larsen off to find help. But when he does not come back, they get so hungry that they start to hallucinate and end up eating a leather boot!

Later Charlie and Big Jim meet up again in the big city. They are still poor and hungry, and decide to return to prospecting. When they go back to the Yukon, will they discover gold? Can Charlie marry his sweetheart?

The music you hear while the film is showing makes up for the lack of spoken dialogue by painting very vivid images of such scenes as the snow storm, a fight, love and a dance. It also imitates the sounds people make, such as hiccupping, sleeping, eating and hallucinating, and reflects their feelings as they experience suspicion, indignity, pride and indifference. Listen for such well-known tunes buried deep in the score as "For He's A Jolly Good Fellow".

Charlie Chaplin Photography Props 拍攝道具，齊來扮查理

1. To make your own prop, first cut the shape out along its outline.
要用手做查理道具，首先沿著線條剪好



2. Then apply glue to the area coloured grey up to the dotted line.
於點線外塗上膠水

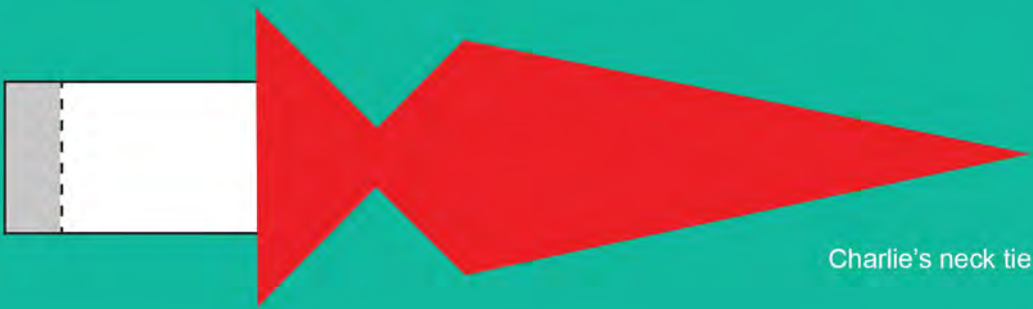


3. Curl the white stripe(s) behind and adhere the glued area to the back of the prop to make a small loop.
將紙條卷成圈狀然後黏貼穩固



4. You should be able to insert a long pencil or a drinking straw through the loop.
It's all set! Take photos with these Charlie Chaplin photography props!
可將鉛筆或飲管套在圈內，完成！拍個照，看誰扮得最相似。





Charlie's neck tie



Charlie's moustache



Charlie's hat



Musical note



Bird

香港管弦樂團

HONG KONG PHILHARMONIC ORCHESTRA

Jaap van Zweden Music Director

BBC 《地球冰失》音樂會

frozen planet
IN CONCERT

with the HK PHIL conducted by BENJAMIN NORTHEY

A CINEMATIC JOURNEY WITH LIVE MUSIC

以現場音樂領航的影像旅程



3 & 4.6.2016 Fri & Sat 8pm

香港文化中心音樂廳
Hong Kong Cultural Centre Concert Hall

\$480 \$380 \$280 \$180

HKPHIL.ORG

現於城市售票網發售
Available at URBTIX now

信用卡購票 Credit Card Booking 2111 5999 www.urbtix.hk | 票務查詢 Ticketing Enquiries 3761 6661 | 節目查詢 Programme Enquiries 2721 2332

香港管弦樂團由香港特別行政區政府資助 · 香港管弦樂團為香港文化中心場地伙伴

The Hong Kong Philharmonic Orchestra is financially supported by the Government of the Hong Kong Special Administrative Region · The Hong Kong Philharmonic Orchestra is a Venue Partner of the Hong Kong Cultural Centre



史卓貝 FRANK STROBEL

指揮 Conductor

史卓貝是一位指揮、編曲、製作人及錄音藝人。自2000年起，他開始出任歐洲電影愛樂學院藝術總監，它在演出默片配樂方面憑着專業而享負盛名。

史卓貝有為經典默片的原創音樂編曲及指揮演出，同時為新作音樂編曲及演出。他為浦羅哥菲夫《亞歷山大·涅夫斯基》的原創音樂重新編曲，及指揮李察·史特勞斯《玫瑰騎士》〔羅拔·威思電影修復版〕。他把默片帶進歌劇院及音樂廳，並獲一致好評。

Frank Strobel is a conductor, arranger, producer and studio musician. Since 2000, he has been Artistic Director of the European Film Philharmonic Institute, which has built a reputation for its expertise in authentic performances of film scores.

As well as editing and conducting the original music for silent film classics, Frank has made a specialty of arranging and performing new scores. He edited the reconstructed original music by Prokofiev for *Alexander Nevsky*, and has conducted the music for Robert Wiene's restored film of Richard Strauss *Der Rosenkavalier*. He has taken silent movies into opera houses and concert halls to great critical acclaim.

FACE 
Productions

A division of the KG Group

Music and Lyrics by
Richard M. Sherman and Robert B. Sherman
Music by Special Arrangement with Sony/ATV Publishing
Adapted for the Stage by Jeremy Sams
Based on the MGM Motion Picture
Licensed Script Adapted by Ray Roderick

Presented through special arrangement with Music Theatre International (MTI).
All authorised performance materials are also supplied by MTI.
www.MTIShows.com



Drama Theatre, HKAPA

Full Version: 10-12 June 7.30pm / 12 June 3.00pm – \$395, \$295*
By Face Academy™: 11-12 June 11.00am / 11 June 3.00pm – \$275, \$175*

*Concessionary tickets for seniors, people with disabilities, and full-time students



Hotline: 31 288 288 | www.hkticketing.com

Tickets are now available from HK Ticketing's box offices located at the Hong Kong Convention and Exhibition Centre, The Hong Kong Academy for Performing Arts, The Academy's Landmark Heritage Campus-Bethanie, Fringe Club, AsiaWorld-Expo, Kowloonbay International Trade & Exhibition Centre and K11 Select, as well as Tom Lee Music Stores.

HK Ticketing applies a customer service fee to all tickets purchased via its network. This fee is additional to the face value of the ticket and is payable upon purchase of tickets.

Enquiries: 3543 5162 / www.FaceProductions.com.hk



藝穗默劇實驗室 FRINGE MIME AND MOVEMENT LABORATORY

音樂會前及後活動 Pre and post-concert activities

藝穗默劇實驗室於1987年成立。劇團的目標及使命是以默劇的感覺、意念和觀點來推廣、探討默劇這個表演藝術形式。最重要的是藝穗默劇實驗室希望能發展及培育出富有香港特質的默劇。

劇團過去曾邀請英國的默劇大師包括Peta Lily、David Glass 和 Desmond Jones來港舉辦工作坊以及擔任導演。

成立至今，劇團完成超過二百八十場次的戶內及戶外演出，其中包括劇場製作（選材較傾向藝術性和實驗性）如藝術節、實驗室定期演出；應邀為慈善社團、學校、商業機構（以幻像默劇或小丑默劇為主）作出表演等。2016年1月1日於青年廣場「湧青青年祭」作演出。

自2013年起，劇團受託於香港管弦樂團為其太古周日家+賞系列：「巴洛克」、「爵士樂」、「差利·卓別靈」、「爵士ABC」，作默劇小丑演出。

Fringe Mime and Movement Laboratory (Mime Lab) was founded by Philip Fok in 1987 and is in-residence at the Hong Kong Fringe Club. A self-financed local performing arts group, Mime Lab bases its creative directions on mime and physical theatre, developing concepts and ideas on contemporary issues.

Mime Lab has, over the years, collaborated with renowned British mime artists David Glass, Desmond Jones and Peta Lily.

Since its establishment, Mime Lab has given more than 280 performances including many at the Hong Kong Fringe Club, plus outdoor, commercial, charity and school touring performances. Recent productions have included UNO. Fantasia (2015), Sisterhood (2016) and Youth Square New Years' Festival (2016).

Since 2013 Mime Lab has been invited by the Hong Kong Philharmonic Orchestra to engage in audience-building activities for the Swire Sunday Family Series – Baroque for Kids (2013), Jazz for Family (2013), Chaplin for Kids (2014) and Jazz up for Kids (2015).

SHARE & TOUCH...

香港管弦樂團教育及社區活動

The Hong Kong Philharmonic Orchestra's
Education and Community Engagement Projects

- 1 華僑永亨銀行社區音樂會—幪面人呢？ (31-10-2015)
OCBC Wing Hang Community Concert - Masks Everywhere!
- 2 太古「港樂·星夜·交響樂」@ 中環海濱 (21-11-2015)
Swire Symphony Under The Stars @ Central Harbourfront
- 3 「賽馬會音樂密碼教育計劃」—與港樂同台綵排及演出 (22-10-2015)
Jockey Club Keys to Music Education Programme -
Share the Stage with the HK Phil
- 4 「賽馬會音樂密碼教育計劃」—學校專場音樂會
Jockey Club Keys to Music Education Programme -
Schools Concerts
- 5 「賽馬會音樂密碼教育計劃」—室樂小組到校表演
Jockey Club Keys to Music Education Programme -
Ensemble Visits to Schools





香港管弦樂團

HONG KONG PHILHARMONIC ORCHESTRA



「梵志登對音樂高水準的堅持，而非皆舞台效果嘩眾取寵。他領導港樂更上一層樓，不僅是港樂也是香港所有樂迷之福。」李歐梵，《明報》

香港管弦樂團（港樂）被喻為亞洲最前列的古典管弦樂團之一。在為期44週的樂季中，樂團共演出超過一百五十場音樂會，把音樂帶給超過二十萬名觀眾。

梵志登是現今國際古典樂壇最炙手可熱的指揮之一，他自2012/13樂季正式擔任港樂音樂總監一職。梵志登大師獲紐約愛樂委任為下任音樂總監，此任命並不會影響梵氏在港樂至2019年夏季的任期。

余隆由2015/16樂季開始被委任為首席客席指揮，任期暫為三年。

樂團在梵志登的領導下，正在進行眾多演出計劃，其中包括為期四年的華格納《尼伯龍的指環》旅程，以歌劇音樂會形式，每年演出一齣並灌錄整套聯篇歌劇。港樂剛完成旅程的第二部份，音樂會由拿索斯唱片進行現場錄音及發行，令港樂成為中港兩地首個演出這齣鉅著的本地樂團。

同為在梵志登的領導下，港樂於2014/15樂季完成了歐洲五國七個城市的巡演，音樂會在倫敦、維也納、蘇黎世、燕豪芬、伯明翰、柏林和阿姆斯特丹舉行，觀眾對音樂會反應踴躍，樂評人對演出皆給予正面評價。於維也納金色大廳的演出更已被錄製，並安排作電視廣播。

The Hong Kong Philharmonic Orchestra (HK Phil) is recognised as Asia's foremost classical orchestra. The Orchestra presents more than 150 concerts over a 44-week season and attracts more than 200,000 music lovers annually.

Jaap van Zweden, one of today's most sought-after conductors, is the Orchestra's Music Director, a position he has held since the 2012/13 concert season. Maestro van Zweden was recently announced as the next Music Director of the New York Philharmonic. This appointment will not affect his tenure with the HK Phil; his commitment to the HK Phil extends at least to the summer of 2019.

Yu Long was appointed for an initial three-year term in the 2015/16 season as Principal Guest Conductor .

Under Maestro van Zweden, the HK Phil is undertaking a variety of initiatives including a four-year project to perform and record the complete *Ring of the Nibelung* (Richard Wagner). The Orchestra is in the second of this four-year journey, performing one opera annually in concert. The performances are being recorded live for the Naxos label and mark the first performances by a Hong Kong or mainland Chinese orchestra of the entire *Ring* cycle.

Also under van Zweden, the orchestra undertook a highly successful five-country, seven-city tour of Europe in the 2014/15 season, with concerts in London, Vienna, Zurich, Eindhoven, Birmingham, Berlin and Amsterdam. Performances were met with enthusiasm and universally positive reviews. The concert in Vienna's Musikverein was filmed for broadcast on TV.

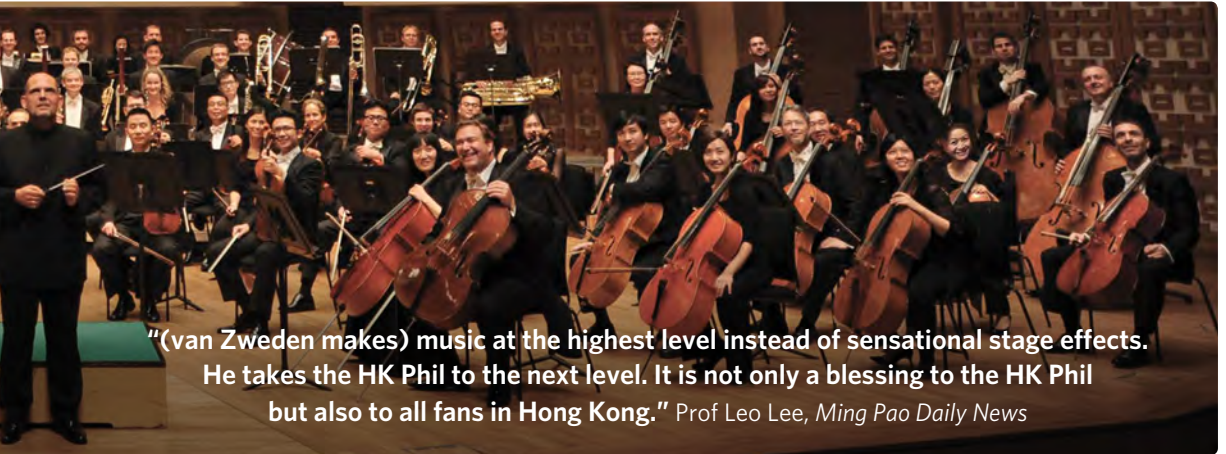
Conductors and soloists who have recently performed with the orchestra include Vladimir Ashkenazy, Ning Feng, Matthias



「許多歐洲樂團都希望他們能奏出這個水平」

“Many European orchestras wish they could play like this”

Thiemo Wind, *De Telegraaf*



“(van Zweden makes) music at the highest level instead of sensational stage effects. He takes the HK Phil to the next level. It is not only a blessing to the HK Phil but also to all fans in Hong Kong.” Prof Leo Lee, *Ming Pao Daily News*

近年和港樂合作過的指揮家和演奏家包括：阿殊堅納西、寧峰、葛納、郎朗、余隆、李雲迪、已辭世的馬捷爾、安蘇菲·慕達及王羽佳等。

港樂積極推廣華裔作曲家的作品，除了委約新作，更已灌錄由作曲家譚盾和盛宗亮親自指揮其作品的唱片，由拿索斯唱片發行。此外，港樂的社區推廣計劃一向備受好評，每年將音樂帶給數以萬計兒童，更已向學童免費派發古典音樂唱片，當中輯錄了布烈頓《青少年管弦樂隊指南》、浦羅哥菲夫《彼得與狼》以及利奧波特·莫扎特《玩具》交響曲。

太古集團自2006年起成為港樂的首席贊助，也是本團歷來最大的企業贊助。太古集團透過支持港樂，致力推廣藝術活動，在藝術水平上精益求精，並推動本地的文化參與和發展，以鞏固香港的國際大都會美譽。

港樂獲香港政府慷慨資助，以及首席贊助太古集團、香港賽馬會和其他支持者的長期贊助，成為全職樂團，每年定期舉行古典音樂會、流行音樂會及推出廣泛而全面的教育計劃，並與香港歌劇院和香港藝術節合作演出歌劇。

港樂的歷史可追溯至1895年，樂團前身中英樂團於該年正式成立，1957年易名為香港管弦樂團，1974年職業化。

香港管弦樂團由香港特別行政區政府資助
香港管弦樂團首席贊助：太古集團
香港管弦樂團為香港文化中心場地伙伴

Goerne, Lang Lang, Yu Long, Yundi Li, the late Lorin Maazel, Anne-Sophie Mutter and Yuja Wang.

The HK Phil promotes the work of Hong Kong and Chinese composers through an active commissioning programme, and has released recordings featuring Tan Dun and Bright Sheng, each conducting their own compositions, on the Naxos label. Its acclaimed community engagement programme brings music to tens of thousands of children annually. A recording was issued free to schoolchildren throughout Hong Kong of Britten's *The Young Person's Guide to the Orchestra*, Prokofiev's *Peter and the Wolf* and Leopold Mozart's *Toy Symphony*.

The Swire Group has been the Principal Patron of the HK Phil since 2006. Through this sponsorship, which is the largest in the orchestra's history, Swire also endeavours to promote artistic excellence, foster access to classical music and stimulate cultural participation in Hong Kong, and to enhance Hong Kong's reputation as one of the great cities of the world.

Thanks to a significant subsidy from the Hong Kong Government and long-term funding from Principal Patron Swire, the Hong Kong Jockey Club and other supporters, the HK Phil now boasts a full-time annual schedule of classical music concerts, pops concerts, an extensive education programme, and collaborations for staged opera with Opera Hong Kong and the Hong Kong Arts Festival.

The Orchestra's history stretches back to 1895, when it was formed as the Sino-British Orchestra. It was re-named in 1957 and became fully professional in 1974.

The Hong Kong Philharmonic Orchestra is financially supported by the Government of the Hong Kong Special Administrative Region

SWIRE is the Principal Patron of the Hong Kong Philharmonic Orchestra

The Hong Kong Philharmonic Orchestra is a Venue Partner of the Hong Kong Cultural Centre

香港管弦樂團

HONG KONG PHILHARMONIC ORCHESTRA

第一小提琴 FIRST VIOLINS



王敬 / 樂團首席
Jing Wang /
Concertmaster



梁建楓 / 樂團第一副首席
Leung Kin-fung / First
Associate Concertmaster



王思恆 / 樂團第二副首席
Wong Sze-hang / Second
Associate Concertmaster



朱蓓 / 樂團第三副首席
Bei de Gaulle / Third
Associate Concertmaster



把文晶
Ba Wenjing



程立
Cheng Li



桂麗
Gui Li



許致雨
Anders Hui



李智勝
Li Zhisheng



龍希
Long Xi



毛華
Mao Hua



梅麗芷
Rachael Mellado



倪瀾
Ni Lan



王亮
Wang Liang



徐烜
Xu Heng



張希
Zhang Xi

第二小提琴 SECOND VIOLINS



● 范丁
Fan Ting



■ 趙瀛娜
Zhao Yingna



▲ 梁文瑋
Leslie Ryang Moonsun



方潔
Fang Jie



何珈樑
Gallant Ho Ka-leung



余思傑
Domas Juškys



簡宏道
Russell Kan Wang-to



劉博軒
Liu Boxuan



冒異國
Mao Yiguo



潘廷亮
Martin Poon Ting-leung



華嘉蓮
Katrina Rafferty



韋鈴木美矢香
Miyaka Suzuki Wilson



冒田中知子
Tomoko Tanaka Mao



黃嘉怡
Christine Wong Kar-yee



周騰飛
Zhou Tengfei



中提琴 VIOLAS



● 凌顯祐
Andrew Ling



■ 李博
Li Bo



▲ 熊谷佳織
Kaori Wilson



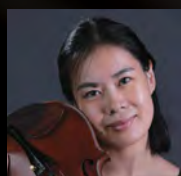
崔宏偉
Cui Hongwei



付水淼
Fu Shuimiao



洪依凡
Ethan Heath



黎明
Li Ming



林慕華
Damara Lomdaridze



羅舜詩
Alice Rosen



孫斌
Sun Bin



張姝影
Zhang Shu-ying

大提琴 CELLOS



● 鮑力卓
Richard Bamping



■ 方曉牧
Fang Xiaomu



▲ 林穎
Dora Lam



陳屹洲
Chan Ngat Chau



陳怡君
Chen Yi-chun



霍添
Timothy Frank



關統安
Anna Kwan Ton-an



李銘蘆
Li Ming-lu



宋泰美
Tae-mi Song



宋亞林
Yalin Song

低音大提琴 DOUBLE BASSES



● 林達僑
George Lomdaridze



◆ 姜馨來
Jiang Xinlai



張沛姬
Chang Pei-heng



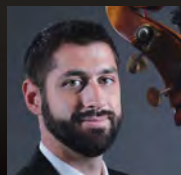
馮榕
Feng Rong



費利亞
Samuel Ferrer



林傑飛
Jeffrey Lehmborg



鮑爾菲
Philip Powell



范戴克
Jonathan Van Dyke

- 首席 Principal
- 聯合首席 Co-Principal
- ◆ 副首席 Associate Principal
- ▲ 助理首席 Assistant Principal

香港管弦樂團

HONG KONG PHILHARMONIC ORCHESTRA

長笛 FLUTES



● 史德琳
Megan Sterling



◆ 盧韋歐
Olivier Nowak



施家蓮
Linda Stuckey

雙簧管 OBOES



● 韋爾遜
Michael Wilson



■ 布若芙
Ruth Bull

英國管 COR ANGLAIS



關尚峰
Kwan Sheung-fung

單簧管 CLARINETS



● 史安祖
Andrew Simon



◆ 史家翰
John Schertle



劉蔚
Lau Wai

低音單簧管 BASS CLARINET



艾爾高
Lorenzo Iosco

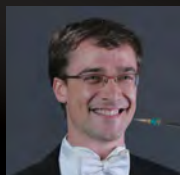
巴松管 BASSOONS



● 莫班文
Benjamin Moermond



◆ 李浩山
Vance Lee



崔祖斯
Adam Treverton Jones

低音巴松管 CONTRA BASSOON

圓號 HORNS



● 江蘭
Jiang Lin



■ 柏如瑟
Russell Bonifede



▲ 周智仲
Chow Chi-chung

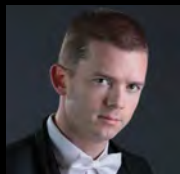


李少霖
Homer Lee



李妲妮
Natalie Lewis

小號 TRUMPETS



● 麥浩威
Joshua MacCluer



◆ 莫思卓
Christopher Moysse



華達德
Douglas Waterston



施樂百
Robert Smith



長號
TROMBONES



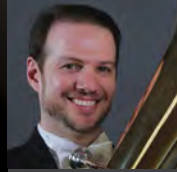
● 韋雅樂
Jarod Vermette



● 韋力奇
Maciek Walicki



● 韋彼得
Pieter Wyckoff



● 雷科斯
Paul Luxenberg

低音長號
BASS TROMBONE

大號
TUBA

定音鼓
TIMPANI

敲擊樂器
PERCUSSION



● 龐樂思
James Boznos



● 白亞斯
Aziz D. Barnard Luce



● 梁偉華
Raymond Leung Wai-wa



● 胡淑徽
Sophia Woo Shuk-fai

鍵盤
KEYBOARD



● 葉幸沾
Shirley Ip

特約樂手
FREELANCE PLAYERS

大提琴：黃家立
Cello: Wong Ka-lap

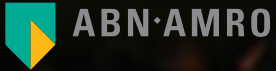
豎琴：黃立雅[^]
Harp: Huang Li-ya[^]

[^] 試行性質
[^] On Trial Basis

大師席位贊助

THE MAESTRO PODIUM ENDOWMENT

由以下機構贊助
Endowed by



樂團席位贊助

CHAIR ENDOWMENT

成為樂團席位的贊助人，您可以與港樂及樂師建立一個更緊密的連繫，推動港樂的發展，提高樂團的質素，讓才華洋溢的音樂家踏上藝術頂峰。

By endowing an orchestra chair, you help the orchestra attract and retain the most gifted musicians in the world. Donors who choose to give in this way enjoy close relationships with our musicians and become valued members of the Hong Kong Philharmonic Orchestra family.

香港管弦樂團感謝以下機構及贊助人支持樂團席位贊助。

The Hong Kong Philharmonic Orchestra would like to thank the following sponsor of our Chair Endowment.

鮑力卓

Richard Bamping

大提琴首席
Principal Cello

鮑力卓的樂師席位由以下機構贊助：

The Musician's Chair for Richard Bamping is endowed by the following organisation:

邱啟楨紀念基金
C. C. Chiu Memorial Fund

如需查詢捐款或其他贊助計劃，歡迎致電2721 2030 或電郵至 development@hkphil.org 與我們聯絡。
Enquiries for donations or other sponsorship schemes, please call 2721 2030 or email development@hkphil.org



大師會

MAESTRO CIRCLE

大師會特別為熱愛交響樂的企業及人士而設，旨在推動香港管弦樂團的長遠發展及豐富市民的文化生活。港樂謹此向下列各大師會會員致謝：

MAESTRO CIRCLE is established for the business community and individuals who are fond of symphonic music. It aims to support the long-term development of the Hong Kong Philharmonic Orchestra and to enrich cultural life. We are grateful to the following Maestro Circle members:

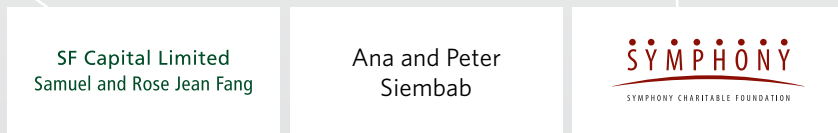
白金會員 Platinum Members



鑽石會員 Diamond Members



綠寶石 Emerald Members



珍珠會員 Pearl Members





多謝支持

THANK YOU FOR YOUR SUPPORT

香港管弦樂團在此向以下商業機構及熱心人士表達由衷謝意：

The Hong Kong Philharmonic Orchestra is grateful to the following corporations and individuals for their generous support:

樂團席位贊助 CHAIR ENDOWMENT

鮑力卓（大提琴首席）的樂師席位由以下機構贊助：

The Musician's Chair for Richard Bamping (Principal Cello) is endowed by the following organisation:

邱啟楨紀念基金 • C. C. Chiu Memorial Fund

常年經費基金 ANNUAL FUND

HK\$100,000 or above 或以上

Mr & Mrs David Fried

Hsin Chong International Holdings Ltd • 新昌國際集團有限公司

Mr Kung Ming Foo Jackson • 龔鳴夫先生

Sin Wai Kin Foundation Limited • 洗為堅基金有限公司

Mr & Mrs S H Wong Foundation Ltd • 黃少軒江文璣基金有限公司

HK\$50,000 - HK\$99,999

Mr & Mrs E Chan • 陳建球伉儷

Mr & Mrs Lowell and Phyllis Chang • 張爾惠伉儷

Scott Engle and Penelope Van Niel

Mr & Mrs Leung Lit On • 梁烈安伉儷

Mr & Mrs Nicholas Sallnow-Smith

HK\$25,000 - HK\$49,999

Mr & Mrs Vincent Duhamel and Anne Charron

Mr & Mrs Cheuk-Yan and Rotina Leung • 梁卓恩先生夫人

Mr & Mrs James and Nisa Lin

Mr & Mrs Frank and Elizabeth Newman

Mr Stephen Tan • 陳智文先生

Ms Tse Chiu Ming • 謝超明女士

The Wang Family Foundation • 汪徵祥慈善基金

Mrs Yu Hu Miao Florence

HK\$10,000 - HK\$24,999

Anonymous (1) • 無名氏 (1)

Dr & Mrs B J Buttifant

Dr Edmond Chan • 陳振漢醫生

Mr & Mrs Joseph W N Cheung • 張宏毅律師及夫人

Mr Edwin Choy • 蔡維邦先生

Dr & Mrs Robert John Collins

Dr & Mrs Carl Fung

Mr & Mrs Kenneth H C Fung • 馮慶鏘伉儷

Mr & Mrs Patrick Fung • 馮柏棟伉儷

Mr & Mrs Fung Shiu Lam • 馮兆林先生夫人

Dr Affandy Hariman • 李奮平醫生

Mr John Hellinikakis

Mr Edmond Huang and Ms Shirley Liu • 黃翔先生及劉莉女士

Mr & Mrs Ko Ying • 高鷹伉儷

Mr & Mrs Charles and Keiko Lam

Dr Lee Kin Hung • 李健鴻醫生

HK\$10,000 - HK\$24,999

Mr T S Lee

Dr Lillian Leong • 梁馮令儀醫生

Mr Jan Leung and Ms Emily Chow • 梁贊先生及周嘉平女士

Ms Li Shuen Pui Agnes

Candice and Dominic Liang

Mr & Mrs William Ma • 馬榮楷先生夫人

Dr Mak Lai Wo • 麥禮和醫生

Prof John Malpas

Mr & Mrs Gilles Martin

Craig Merdian and Yelena Zakharova

Mr & Mrs A Ngan

Dr & Mrs Joseph Pang

Mrs A M Peyer

Mr Poon Chiu Kim Raymond • 潘昭劍先生

Ms Eligina YL Poon

Barbara and Anthony Rogers

Mr & Mrs Paul Tsang • 曾健鵬先生夫人

Dr Tsao Yen Chow • 曹延洲醫生

HK\$5,000 - HK\$9,999

Anonymous (4) • 無名氏 (4)

Mr Lawrence Chan C Y

Mr Bryan Cheng

Prof Paul Cheung

Mrs Evelyn Choi

Consigliere Limited

Mr Bryan Fok • 霍天璋先生

Mr & Mrs Michael and Angela Grimsdick

Ms Rose Ho Hofmann • 何康濼女士

Mr Maurice Hoo • 胡立生先生

Ms Teresa Hung • 熊芝華老師

Lance Lan

Mr & Mrs Jack Leung

Mr Paul Leung • 梁錦暉先生

Ms D Nam

Mr John & Mrs Coralie Otoshi

Rotary Club of City Northwest Hong Kong • 港城西北扶輪社

Mr & Mrs Ivan Ting • 丁天立伉儷

Ms Tse Wai Shun Susan • 謝惠純女士

Mr & Mrs S T Tso

Mr & Mrs Matthew Wong and Rachel Lloyd-Wong • 王威遠先生及王羅愛欣女士

Mr Patrick Wu

永芳堂

多謝支持

THANK YOU FOR YOUR SUPPORT

學生票資助基金 STUDENT TICKET FUND

HK\$100,000 or above 或以上

First Initiative Foundation • 領賢慈善基金

Mr & Mrs David Fried

Hang Seng Bank • 恒生銀行

Zhilan Foundation • 芝蘭基金會

HK\$50,000 - HK\$99,999

Mr & Mrs Alfred W K Chan • 陳永堅伉儷

Mr & Mrs E Chan • 陳建球伉儷

Ms Doreen Lee and Mr Lawrence Mak • 李玉芳女士及麥耀明先生

Shun Hing Education and Charity Fund Limited • 信興教育及慈善基金有限公司

HK\$25,000 - HK\$49,999

Mr & Mrs Lam Ting Kwok Paul • 林定國先生夫人

Mr & Mrs Cheuk-Yan and Rotina Leung • 梁卓恩先生夫人

Tin Ka Ping Foundation • 田家炳基金會

Mrs Yu Hu Miao Florence

HK\$10,000 - HK\$24,999

Anonymous (1) • 無名氏 (1)

Mr & Mrs Herbert Au-yeung • 歐陽浩榮先生夫人

Mr David Chiu

Dr York Chow • 周一嶽醫生

Mr Edwin Choy • 蔡維邦先生

Mr & Mrs Kenneth H C Fung • 馮慶鏘伉儷

Mr & Mrs Patrick Fung • 馮柏棟伉儷

Mr & Mrs Fung Shiu Lam • 馮兆林先生夫人

Dr Affandy Hariman • 李奮平醫生

Ms Teresa Hung • 熊芝華老師

Mr Geoffrey Ko • 高惠充先生

Mr & Mrs Ko Ying • 高鷹伉儷

Mr T S Lee

Dr Lilian Leong • 梁馮令儀醫生

Mr Jan Leung and Ms Emily Chow • 梁贊先生及周嘉平女士

Dr Thomas Leung W T • 梁惠棠醫生

Candice and Dominic Liang

Lo Kar Foon Foundation • 羅家驩慈善基金

Mr Stephen Luk

Mrs Ruby Master

Mr & Mrs A Ngan

Ms A Poon

Ms Eligina YL Poon

Mr & Mrs Stephen Suen • 孫漢明先生夫人

Mr & Mrs Paul Tsang • 曾健鵬先生夫人

Dr Tsao Yen Chow • 曹延洲醫生

Mr Wong Kin On Thomas • 黃建安先生

Mr & Mrs Yam Yee Kwan David • 任懿君伉儷

Dr M T Geoffrey Yeh • 葉謀遵博士

HK\$5,000 - HK\$9,999

Anonymous (4) • 無名氏 (4)

Mr Durand Andre and Ms Sham Ting Ting

Mr Iain Bruce

Mrs Evelyn Choi

Mr Philip Lawrence Choy

Mr Chu Ming Leong

Prof David Clarke • 祈大衛教授

Mr Jean-Christophe Clement

Mr Gordon Gao • 高遠先生

Dr Ernest Lee • 李樹榮博士

Mr Paul Leung • 梁錦暉先生

Mr Richard Li • 李景行先生

Dr Ingrid Lok and Dr Tim Li

Lok Sze Pui

Mustard Seed Foundation • 芥籽園基金

Mr Paul Shieh • 石永泰先生

Anna Stephenson and Alan Leigh

Mr & Mrs Leland Sun • 孫立勳先生夫人

Mr Tony Tsoi • 蔡東豪先生

Mrs Gertrude Wong • 黃鄭國璋女士

Mr Alan Yue and Ms Vivian Poon

羅紫媚小姐 and Joe Joe



多謝支持

THANK YOU FOR YOUR SUPPORT

贊助基金 ENDOWMENT TRUST FUND

贊助基金於一九八三年由以下機構贊助得以成立。

香港賽馬會慈善信託基金

The Hong Kong Jockey Club Charities Trust

置地有限公司

The Hongkong Land Group

怡和有限公司

Jardine, Matheson & Company Ltd

The Endowment Trust Fund was set up in 1983 with these initial sponsors.

滙豐銀行慈善基金

The Hongkong Bank Foundation

花旗銀行

Citibank, NA

香港董氏慈善基金會

The Tung Foundation

商藝匯萃 PAGANINI PROJECT

此計劃由「商藝匯萃」發起及組織。

汪穗中先生 捐贈

艾曼·謝曼明 (1907) 小提琴·由冨田中知子小姐使用

張爾惠先生 捐贈

洛治·希爾 (c.1800) 小提琴·由王亮先生使用

鍾普洋先生 捐贈

多尼·哈達 (1991) 大提琴

史葛·羅蘭士先生 借出

安素度·普基 (1990)·由張希小姐使用

This project is initiated and organised by Business for Art Foundation.

Donated by Mr Patrick Wang

Emile Germain (1907) Violin, played by Ms Tomoko Tanaka Mao

Donated by Mr Lowell Chang

Lockey Hill (c.1800) Violin, played by Mr Wang Liang

Donated by Mr Po Chung

Dawne Haddad (1991) Violoncello

Loaned by Mr Laurence Scofield

Ansaldo Poggi (1910) Violin, played by Ms Zhang Xi

樂器捐贈 INSTRUMENT DONATION

香港管弦協會婦女會 捐贈

所捐贈之罕有樂器

- 安域高·洛卡 (1902) 小提琴·由程立先生使用
- 桑·巴蒂斯·維爾翁 (1866) 小提琴·由樂團第三副首席朱蓓小姐使用
- 約瑟·加里亞奴 (1788) 小提琴·由樂團首席王敬先生使用
- 卡洛·安東尼奧·狄斯多尼 (1736) 小提琴·由倪瀾先生使用

為支持「提升樂團樂器素質計劃」而捐贈之其他樂器

- 德國轉閩式小號兩支
- 德國華格納大號乙套
- 翼號乙支

Donated by The Ladies Committee of the Hong Kong Philharmonic Society

Rare instruments donated

- Enrico Rocca (1902) Violin, played by Mr Cheng Li
- Jean-Baptiste Vuillaume (1866) Violin, played by Mrs Bei de Gaulle, Third Associate Concertmaster
- Joseph Gagliano (1788) Violin, played by Mr Jing Wang, Concertmaster
- Carlo Antonio Testore (1736) Violin, played by Mr Ni Lan

Other instruments donated in support of the "Instrument Upgrade and Enhancement Project"

- Two German Rotary Trumpets
- A set of Wagner Tubas
- A Flugelhorn

多謝支持

THANK YOU FOR YOUR SUPPORT

香港管弦樂團籌款音樂會 2016

MUSIC IN ACTION - THE HONG KONG PHILHARMONIC ORCHESTRA FUNDRAISING CONCERT 2016

籌備委員會 ORGANISING COMMITTEE

主席 Chair

李何芷韻女士 Mrs Amanda Ho Lee

當然委員 Ex-officio Member

蔡關穎琴律師 Mrs Janice Choi, MH

(港樂籌款委員會主席)

The HK Phil Fundraising Committee Chair)

副主席 Vice-chairs

忻賢雯女士 Ms Lisa Shing

孫燕華女士 Ms Chloe Suen

謝勤女士 Ms Shirley Tse

贊助者 SPONSORS

\$150,000 or above 或以上

香港中華總商會

The Chinese General Chamber of Commerce

莫贊生先生 Mr Mok Tsan San

\$100,000 or above 或以上

龐樂思先生 Mr James Boznos

陳嘉何醫生 Dr Chan Ka-Ho

黃關林先生 Mr Huang Guan Lin

李何芷韻女士 Mrs Amanda Ho Lee

吳國榮先生 Mr Ng Kwok Wing Michael

右思維國際幼兒園暨幼稚園

Rightmind International Nursery & Kindergarten

孫少文基金會 Simon Suen Foundation

黃氏 Wong

王賢訊先生 Mr Vincent Wong

\$50,000 or above 或以上

Dr Duncan Ho Hung Kwong

香港新活力青年智庫 Hong Kong New Youth Energy Think Tank

林文燦博士 Dr Lam Man Chan

李文斌先生 Mr Edmond Lee

李郭靜怡女士 Mrs Lorinda Lee

太古集團慈善信託基金 The Swire Group Charitable Trust

Dr Irene Tang Mo Lin

詹耀良先生 Mr Tsim Yiu Leung

眼科黃俊華醫生先生夫人 Dr & Mrs Wong Chun Wah Alex

香港浙江省同鄉會聯合會 Hong Kong Zhejiang United

由於支持者眾多，未能在此盡錄，港樂在此謹對所有支持此籌款音樂會的人士及機構致以謝意。

The HK Phil would like to express heartfelt gratitude to all those who have supported this fundraising concert. Owing to the large number of supporters, we are unable to list them all here.

\$10,000 or above 或以上

卓翹教育顧問 Aces Education Consultancy · 無名氏 Anonymous · 華文泰先生夫人 Mr & Mrs Bronco But · 戚麗如女士 Ms Chik Lai Yu · 趙怡女士 Ms Cindy Chiu · 邱詠筠女士 Ms Winnie Chiu · 英皇金融縱橫財經網站 www.MW801.com · 四洲集團 FourSeas Group · 港樂籌款委員會 The HK Phil Fundraising Committee · Mr & Mrs Richard Hui · Miss Gu Jin Li & Miss Lin Yi Han · 林志文先生 Mr Lam Chi Man · 梁馮令儀醫生 Dr Lilian Leong · 李立言醫生 Dr Lee Lip Yen Dennis · 呂銘豪先生 Mr Andrew Lui · 馬浩文博士 Dr Hoffman Ma · 龐維新先生夫人 Mr & Mrs Wilson Pong · 太子珠寶鐘錶愛心慈善基金 Prince Jewellery and Watch Love and Care Charitable Foundation · 莎莎國際控股有限公司 Sa Sa International Holdings Limited · 蘇陳偉香女士 Mrs Susan So Chan Wai-hang · 蕭劍榮先生 Mr Franki Shiu · 沈雅恩先生 Mr Benedict Sin · 譚毓植女士 Ms Tam Yuk Ching Jenny · 詹榮良 Tsim Wing Leung · 黃文顯先生 Mr Raymond Wong

Others 其他

無名氏 Anonymous · Cao Fujun · 陳青正先生夫人 Mr & Mrs Chan Hang Ching · Mr & Mrs Kevin Chan · 陳百靈 Chan Pak Ling Juanie · 陳偉龍 Chan Wai Lung Franky · 陳永翼 Chan Wing Yik · 陳炯方先生 Mr Chen Jiong Fang · Cheung Theobald Aylwin · 鄭志華 · Dr Ryan Cho · Dr Kelvin Chow · 朱申萍 · Mr Andrew A. Del Valle · 顧東華先生 · Dr Wendy Kwan · Dr Ku Ka Ming · 賴廣麟醫生先生夫人 Dr & Mrs Lai Kwong Lun · 林昱好 Astrea Lam · Miss Lois Lam Yu Ka · Ms Lan Chia Chen · Lee Hui Yen Christine · Lee Kam Chuen · 李偉文 Lee Wai Man · 香港口琴藝術學院李俊樂先生 · Lee Yeuk Lui, Rosa · 陸智豪 Lek Chi Ho Brian · 梁小慧 Leung Siu Wai Annie · 李錦玲女士 Ms Li Jinling · 盧龍猷醫生 Dr Lo Chung Yau · 郎晞喻 Renee Hei Yu Long · Charlene Low · 馬丁 Martin Ma · Bernard Man · 森蔚有限公司 Merx Limited · 保良局林文燦英文小學 PLK Lam Man Chan English Primary School · 蘇露晴 Valerie So · Dr Eric Tang · Tsoi Wai Man Vien · Ms Flora Wong · 王炫舜及家人 Wong Gideon Chester & family · 黃嘉贊 Wong Ka Tsan · Ms Vickie Wong · 楊芷靈 Yeung Chi Ying · 楊禮鏗及楊凱晴 · Dr Zenon Yeung · 葉俊麒 Yip Chun Ki Aidan · Yu Kam Yiu Dennis



多謝支持

THANK YOU FOR YOUR SUPPORT

香港管弦樂團籌款晚宴「中國夢」

HONG KONG PHILHARMONIC ORCHESTRA FUNDRAISING DINNER "THE CHINESE DREAM"

籌備委員會 Organising Committee

主席 Chairman

楊俊偉先生 Mr Anthony Yeung

顧問 Advisor

蔡關穎琴律師 Mrs Janice Choi, MH

拍賣及其他贊助 Auction and other Supporters

\$50,000 or above 或以上

劉元生先生 Mr Y. S. Liu, MH

\$25,000 or above 或以上

邱詠筠女士 Ms Winnie Chiu

蔡關穎琴律師 Mrs Janice Choi, MH

韓磊先生 Mr Han Lei

余隆先生 Mr Yu Long

現金贊助 Cash Supporters

鄭鐘漢先生 Mr Christopher Cheng

景業控股 (香港) 有限公司

Jingye Holdings (HK) Limited

Mr Ken Kwan

李兆麟先生 Mr Edward Lee

蘇彰德先生 Mr Douglas So

紀念品贊助 Souvenir Supporter

Rose Avenue

冠名贊助 Title Sponsor



捐款及贊助人 Donors and Supporters

鑽石贊助 Diamond Supporters

陳寧先生 Mr Chan Ling

金山能源集團有限公司

King Stone Energy Group Limited

生命泉健康產業基金/施小姐

Life Spring Healthcare Fund & Ms Shi

絲路能源服務集團有限公司

Silk Road Energy Services Group Ltd

金贊助 Gold Supporters

中國9號健康產業有限公司

China Jiu hao Health Industry Corporation Limited

黃一峰先生 Mr William Huang

生命泉健康產業基金/施小姐

Life Spring Healthcare Fund & Ms Shi

Cynthia & Hans So

譚銳敏先生 Mr Raymond Tam

譚紹祺先生 Mr Tam Siu Ki

銀贊助 Silver Supporters

華夏能源控股集團 Chinese Energy Holdings Limited

高士輪集團 KOSSILON GROUP

林忠豪先生 Mr Lam Chung Ho Alastair

生命泉健康產業基金/施小姐

Life Spring Healthcare Fund & Ms Shi

莫贊生先生 Mr Mok Tsan San

御濠娛樂控股有限公司

Rex Global Entertainment Holdings Limited

2015-16

「青少年聽眾」計劃

YOUNG AUDIENCE SCHEME

yas.hkphil.org

贊助 Sponsored by
The Tung Foundation
香港董氏慈善基金會

電郵 Email:
yas@hkphil.org

查詢 Enquiries:
2312 6103

會員專享：

- 與著名音樂家及港樂樂師近距離接觸
- 音樂會門票折扣優惠 (學生：四五折，同行成人：九折)
- 免費欣賞至少一場港樂精選音樂會
- 音樂傳習工作坊及樂器大師班
- 音樂會公開探班
- 積分獎勵計劃和獎賞
- 電子會員通訊
- 特約商戶購物優惠

立即成為香港董氏慈善基金會
「青少年聽眾」計劃一分子
COME JOIN THE TUNG FOUNDATION -
YOUNG AUDIENCE SCHEME

只要你是全日制香港中、小學生，便可以立即參與我們的計劃，成為HK Phil Junior，讓古典音樂伴著你成長，成為你終生好友！

由香港管弦樂團主辦，香港董氏慈善基金會贊助的「青少年聽眾」計劃會員 - HK Phil Junior，可透過參與不同的音樂活動及精選音樂會，與港樂及世界各地的音樂家作近距離的接觸。除此之外，更可享受有全年港樂音樂會門票折扣，及其他積分獎勵計劃和獎賞。

If you are a full-time local primary or secondary school student, come join our scheme and be an HK Phil Junior. Let Classical music grow with you and be your lifelong buddy!
Presented by the HK Phil and sponsored by The Tung Foundation - Young Audience Scheme offers you exclusive access to your orchestra and world-class musicians. Being an HK Phil Junior, you will enjoy the activities, events organized by us, year-round privileges and discounts as well as our rewards scheme with souvenirs.



MEMBERS WILL ENJOY:

- Exclusive opportunities to meet world-class musicians
- HK Phil concert ticket discounts (Student: 55% off; accompanying adults: 10% off)
- Special invitations to attend at least one HK Phil concert for free
- Music appreciation talks and instrumental masterclasses
- Open rehearsals
- Bonus point system and souvenirs
- E-newsletters
- Discounts at designated merchants



2015-16

『青少年聽眾』計劃參加表格 YOUNG AUDIENCE SCHEME ENROLLMENT FORM



個人資料 PERSONAL DETAILS 請以英文正楷填寫 Please print in English in BLOCK letters.

姓名 Name (英文 English) _____ (中文 Chinese) _____

出生日期 Date of Birth _____ 年 Year _____ 月 Month _____ 日 Day _____ 年齡 Age _____ 性別 Sex _____

會員電郵地址 Member's Email address _____

家長電郵地址 Parent's Email address _____

地址 Address (英文 English) _____

電話 Tel (住宅 Home) _____ (會員手提 Member's Mobile) _____

(家長手提 Parent's Mobile) _____

學校名稱 School Name (英文 English) _____

就讀班級 Class _____ 小學 Primary 中學 Secondary

樂器 Musical Instrument (s) _____

如屬YAS舊會員，請填寫會員編號
If you were a YAS member, please fill in your membership number: _____

* 必須填寫至少一個電郵地址，樂團日後將以此電郵發放免費音樂會通訊及活動資料。
You must provide at least one email address so as to receive our latest news about free concerts and events.

* 如非經學校報名，請附上學生證明文件。
Please provide student identification if you are not enrolling via school.

會籍 MEMBERSHIP

會籍有效期 Membership Period: 1/9/2015 – 31/8/2016

新會員 New Member 會費 Membership fee: HK\$60 舊會員 Old Member 會費 Membership fee: HK\$50

付款方法 PAYMENT

支票付款 By Cheque 支票抬頭：『香港管弦協會』 Payee: "The Hong Kong Philharmonic Society Limited."

銀行 Bank _____ 支票號碼 Cheque No. _____

現金付款 By Cash

親自前往本樂團辦事處繳交 Make a cash payment at our office during office hours
(辦公時間 Office hours: 星期一至五 Mon-Fri 9:00am – 12:30pm, 2:00 – 5:45pm · 公眾假期除外 except public holidays)

將會費以現金直接存入 / 轉賬至『香港管弦協會』戶口 (匯豐銀行002-221554-001)，請連同轉賬收據副本交回本會。
Pay the membership fee by cash into the "The Hong Kong Philharmonic Society Limited." account (HSBC Account No. 002-221554-001).
Please enclose the photocopy of ATM customer advice / Pay-in slip to us.

信用卡付款 By Credit Card

VISA 卡 / VISA Card 萬事達卡 / Master Card

請在我的信用卡戶口記賬港幣 Please debit my credit card amount with HK\$ _____

信用卡號碼 Credit Card No. _____ 持卡人姓名 Cardholder's Name _____

有效日期至 Valid Until _____ 發卡銀行 Issuing Bank _____

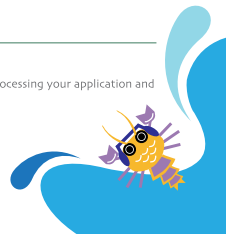
簽署 Signature _____ 日期 Date _____

* 收到表格後，我們將盡快於四星期內郵寄會員證及有關資料至府上。 Your membership card and information will be sent out within 4 weeks after receipt of enrollment form.

* 所有申請者的個人資料只作是次報名、統計、日後聯絡及宣傳香港管弦樂團活動之用，而填寫此表亦屬自願性質。 The personal data provided in this form will be used by The HK Phil for processing your application and will be held for statistic, correspondence and publicity purposes.

香港九龍尖沙咀香港文化中心行政大樓八樓 Level 8, Administration Building, Hong Kong Cultural Centre, Tsim Sha Tsui, Kowloon, Hong Kong.

電話 Tel: 2312 6103 傳真 Fax: 2721 5443 網址 Website: yas.hkphil.org 電郵 Email: yas@hkphil.org



香港管弦協會有限公司

THE HONG KONG PHILHARMONIC SOCIETY LIMITED

名譽贊助人

Honorary Patron

行政長官
梁振英先生

The Chief Executive
The Hon C. Y. Leung, GBM, GBS, JP

董事局

Board of Governors

劉元生先生
主席

Mr Y. S. Liu, MH
Chairman

蘇澤光先生
蔡關穎琴律師
副主席

Mr Jack C. K. So, GBS, OBE, JP
Mrs Janice Choi, MH
Vice-Chairmen

冼雅恩先生
司庫

Mr Benedict Sin Nga-yan
Treasurer

陳錦標博士
蔡寬量教授
霍經麟先生
湯德信先生
馮鈺斌博士
梁馮令儀醫生
梁卓偉教授
羅志力先生
蘇兆明先生
史樂山先生
蘇彰德先生
詩柏先生
董溫子華女士
楊顯中博士

Dr Joshua Chan Kam-biu
Prof Daniel Chua
Mr Glenn Fok
Mr David L. Fried
Dr Patrick Fung Yuk-bun, JP
Dr Lilian Leong, BBS, JP
Prof Gabriel Leung, GBS, JP
Mr Peter Lo Chi-lik
Mr Nicholas Sallnow-Smith
Mr John Slosar
Mr Douglas So
Mr Stephan Spurr
Mrs Harriet Tung
Dr John Yeung Hin-chung, SBS, OBE, JP

贊助基金委員會

Endowment Trust Fund Board of Trustees

羅志力先生
主席

Mr Peter Lo Chi-lik
Chair

劉元生先生
冼雅恩先生

Mr Y. S. Liu, MH
Mr Benedict Sin Nga-yan

執行委員會

Executive Committee

劉元生先生
主席

Mr Y. S. Liu, MH
Chair

蘇澤光先生
蔡關穎琴律師
冼雅恩先生
蔡寬量教授
史樂山先生

Mr Jack C. K. So, GBS, OBE, JP
Mrs Janice Choi, MH
Mr Benedict Sin Nga-yan
Prof Daniel Chua
Mr John Slosar

財務委員會

Finance Committee

冼雅恩先生
主席

Mr Benedict Sin Nga-yan
Chair

劉元生先生
湯德信先生
羅志力先生
蘇兆明先生
楊顯中博士

Mr Y. S. Liu, MH
Mr David L. Fried
Mr Peter Lo Chi-lik
Mr Nicholas Sallnow-Smith
Mr John Yeung Hin-chung, SBS, OBE, JP

籌款委員會

Fundraising Committee

蔡關穎琴律師
主席

Mrs Janice Choi, MH
Chair

吳君孟先生
應琦泓先生
副主席

Mr Edward Ng
Mr Steven Ying
Vice-Chairmen

張凱儀女士
雲晞蓮女士
賀羽嘉女士
李何芷韻女士
廖偉芬女士
劉元生先生
施彼得先生
蘇彰德先生
董溫子華女士
楊俊偉博士

Ms Cherry Cheung
Mrs Wendy Hegglin
Ms Daphne Ho
Mrs Amanda T. W. Lee
Ms Jennifer W. F. Liu
Mr Y. S. Liu, MH
Mr Peter Siembab
Mr Douglas So
Mrs Harriet Tung
Dr Anthony Yeung

聽眾拓展委員會

Audience Development Committee

蔡寬量教授
主席

Prof Daniel Chua
Chair

陳錦標博士
霍經麟先生
湯德信先生
紀大衛教授
李偉安先生
梁馮令儀醫生
梁卓偉教授
羅志力先生
史安祖先生
司徒敬先生

Dr Joshua Chan Kam-biu
Mr Glenn Fok
Mr David L. Fried
Prof David Gwilt, MBE
Mr Warren Lee
Dr Lilian Leong, BBS, JP
Prof Gabriel Leung, GBS, JP
Mr Peter Lo Chi-lik
Mr Andrew Simon
Mr Justice Frank Stock, GBS, JP



香港管弦協會有限公司

THE HONG KONG PHILHARMONIC SOCIETY LIMITED

行政人員 MANAGEMENT

麥高德
行政總裁

Michael MacLeod
Chief Executive

行政及財務部

Administration and Finance

何黎敏怡
行政及財務高級總監

Vennie Ho
Senior Director of Administration and Finance

李康銘
財務經理

Homer Lee
Finance Manager

李家榮
資訊科技及項目經理

Andrew Li
IT and Project Manager

吳慧妍
人力資源經理

Annie Ng
Human Resources Manager

郭文健
行政及財務助理經理

Alex Kwok
Assistant Administration and Finance Manager

陳碧瑜
行政秘書

Rida Chan
Executive Secretary

蘇碧華
行政及財務高級主任

Vonee So
Senior Administration and Finance Officer

李穎欣
資訊科技及行政主任

Apple Li
IT and Administrative Officer

黎可澄
行政助理

Cherry Lai
Administrative Assistant

潘穎詩
藝術行政實習生

Renee Poon
Arts Administration Management Trainee

梁錦龍
辦公室助理

Sammy Leung
Office Assistant

藝術策劃部

Artistic Planning

韋雲暉
藝術策劃總監

Raff Wilson
Director of Artistic Planning

趙桂燕
教育及外展經理

Charlotte Chiu
Education and Outreach Manager

王嘉瑩
藝術策劃經理

Michelle Wong
Artistic Planning Manager

林奕榮
教育及外展助理經理

Lam Yik-wing
Assistant Education and Outreach Manager

潘盈慧
藝術策劃主任

Christine Poon
Artistic Planning Officer

發展部

Development

安嘉莉
發展總監

Kylie Anania
Director of Development

李嘉盈
發展經理

Jenny Lee
Development Manager

曾婷欣
發展經理

Renee Tsang
Development Manager

陳沛慈
發展助理經理

Daphne Chan
Assistant Development Manager

李穎勤
發展助理經理

Marinella Li
Assistant Development Manager

蘇寶蓮
發展助理經理

Conny Souw
Assistant Development Manager

市場推廣部

Marketing

夏逸玲
市場推廣總監

Deborah Hennig
Director of Marketing

林映雪
市場推廣經理 (編輯)

Anita Lam
Marketing Manager (Editing)

李碧琪
傳媒關係經理

Becky Lee
Media Relations Manager

曹環璘
市場推廣助理經理

Karin Cho
Assistant Marketing Manager

劉淳欣
市場推廣助理經理

Sharen Lau
Assistant Marketing Manager

何惠嬰
客務主任

Agatha Ho
Customer Service Officer

林嘉敏
客務主任

Carman Lam
Customer Service Officer

蕭朗昕
市場推廣主任

Dawn Shiu
Marketing Officer

樂團事務部

Orchestral Operations

鄭浩然
樂團事務總監

Kenny Chen
Director of Orchestral Operations

黎樂婷
樂團人事經理

Erica Lai
Orchestra Personnel Manager

陳國義
舞台經理

Steven Chan
Stage Manager

何思敏
樂譜管理

Betty Ho
Librarian

陳雅穎
樂團事務主任

Wing Chan
Orchestral Operations Officer

李馥丹
樂團事務主任

Fanny Li
Orchestral Operations Officer

蘇近邦
運輸及舞台主任

So Kan-pong
Transportation and Stage Officer

Exclusively at



通利琴行



YAMAHA

Since 1887

1

The World's First Choice

World's No.1 Musical Instruments by Choice.

from The Music Trades 2015

www.tomleemusic.com.hk



Tom Lee Music



[tomleemusic.hk](https://www.instagram.com/tomleemusic.hk)



TomLeeMusic

KOWLOON
1-9 CAMERON LANE,
TSMHATSUI
2723 9932

HONG KONG
144 GLOUCESTER ROAD,
WANCHAI
2519 0238

NEW TERRITORIES
SHOP 303, HOMESQUARE,
SHATIN
2602 3829

MACAU
RUE DE FRANCISCO XAVIER PEREIRA NO. 96A,
R/C MACAU
(853) 2851 2828

Tsimshatsui · Olympian City · Kowloon Bay · Hunghom · Wanchai · Causeway Bay · Talkoo · Aberdeen · Western District · Shatin · Tseung Kwan O · Tsuen Wan · Tsing Yi · Tuen Mun · Yuen Long · Tai Po · Macau